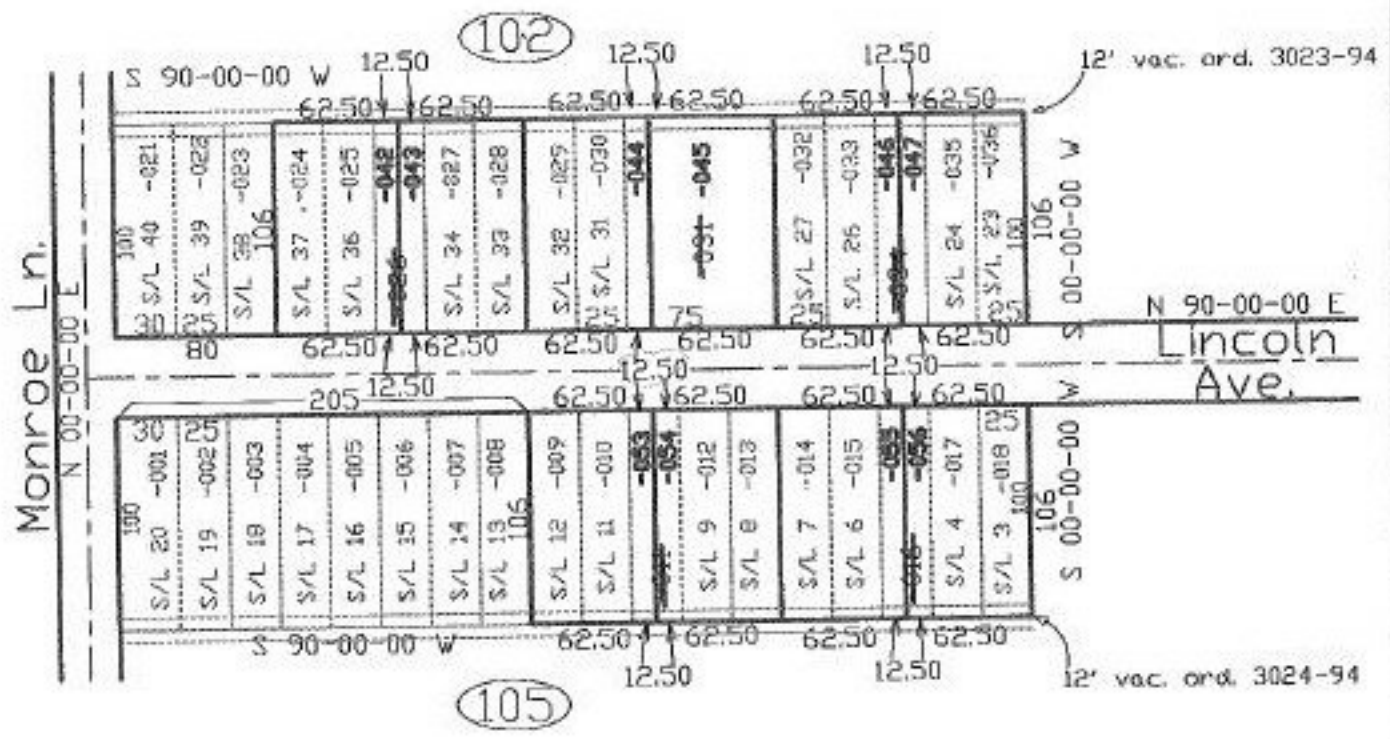


PARENT PARCEL: 07-00-009-105-011, 016, 07-00-009-102-026, 031, 034
 CHILD PARCEL: 07-00-009-105-053 thru -056, 07-00-009-102-042 thru -047
 STARTING POINT: ROW of Monroe Ln. & ROW of Lincoln Ave.

NO. 22476



SPLITS/DEEDS PROCESSED
 LORAIN COUNTY TAX MAP DEPARTMENT
 226 MIDDLE AVE. ELYRIA, OHIO

SURVEYED BY: Dore A. Hoponek
 CLOSURE: 0.00:10.000
 MAP PAGE(S): 07-00-009-A
 APPROVED BY: kac DATE: 3/20/98
 SCALE: 1" = 100' PRIOR INSTRUMENT: #970486740