

#22 475-D

SEE 6-74

19

20

#22475-D

#22475-D

APPROVED
LORAIN CO.
MAP DEPT.

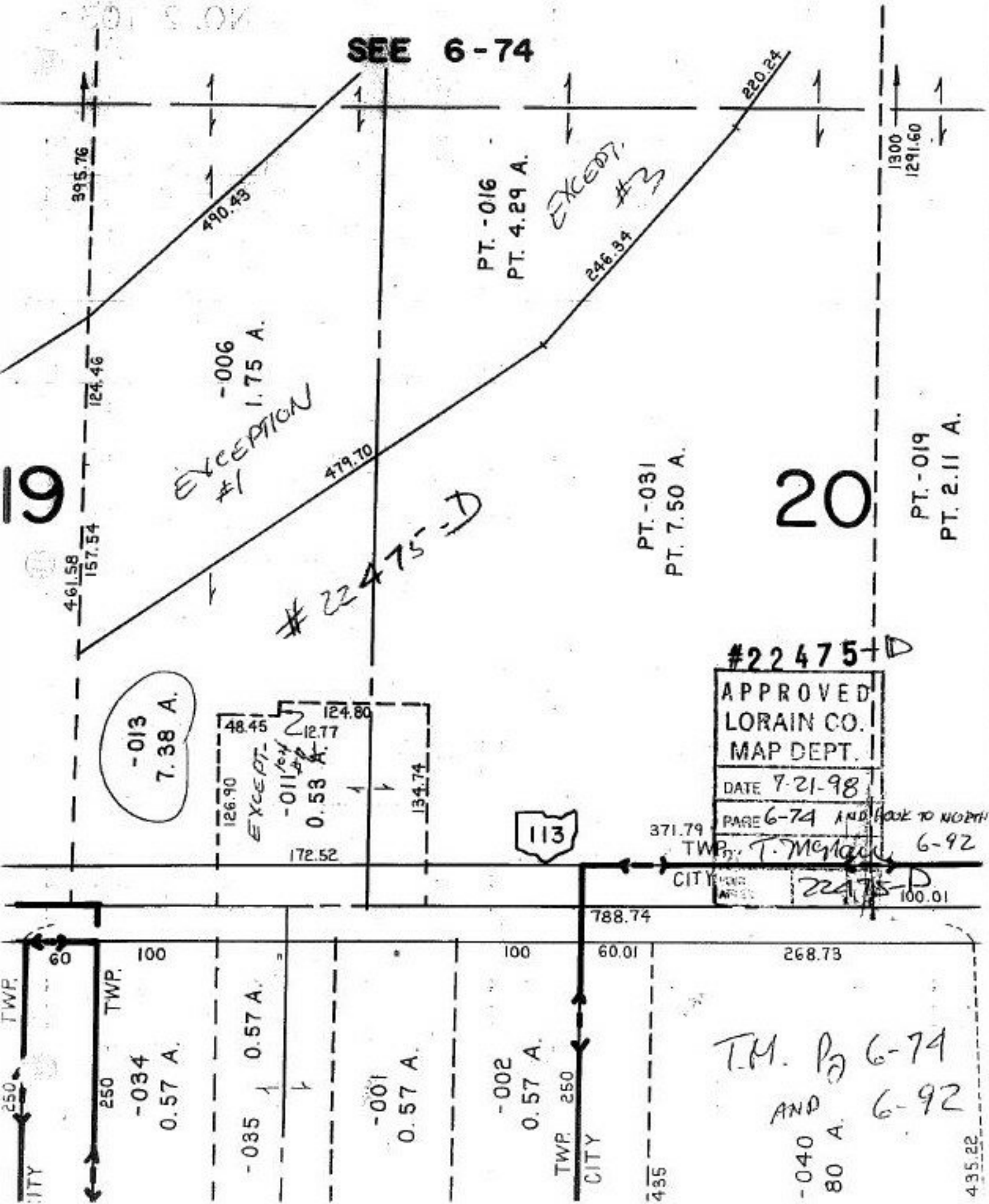
DATE 7-21-98

PAGE 6-74 AND BOOK TO NORTH

TWP. T. McManis 6-92

CITY 22475-D 100.01

T.M. Pg 6-74
AND
80 A. 6-92



EXCEPTION #1
-006
1.75 A.

PT. -016
PT. 4.29 A.

EXCEPT. #3

1300
1291.60

PT. -031
PT. 7.50 A.

PT. -019
PT. 2.11 A.

-013
7.38 A.

EXCEPT. #2
-011
0.53 A.

113

371.79
TWP. T. McManis 6-92
CITY 22475-D 100.01

-034
0.57 A.

-035
0.57 A.

-001
0.57 A.

-002
0.57 A.

-040
80 A.

495.22