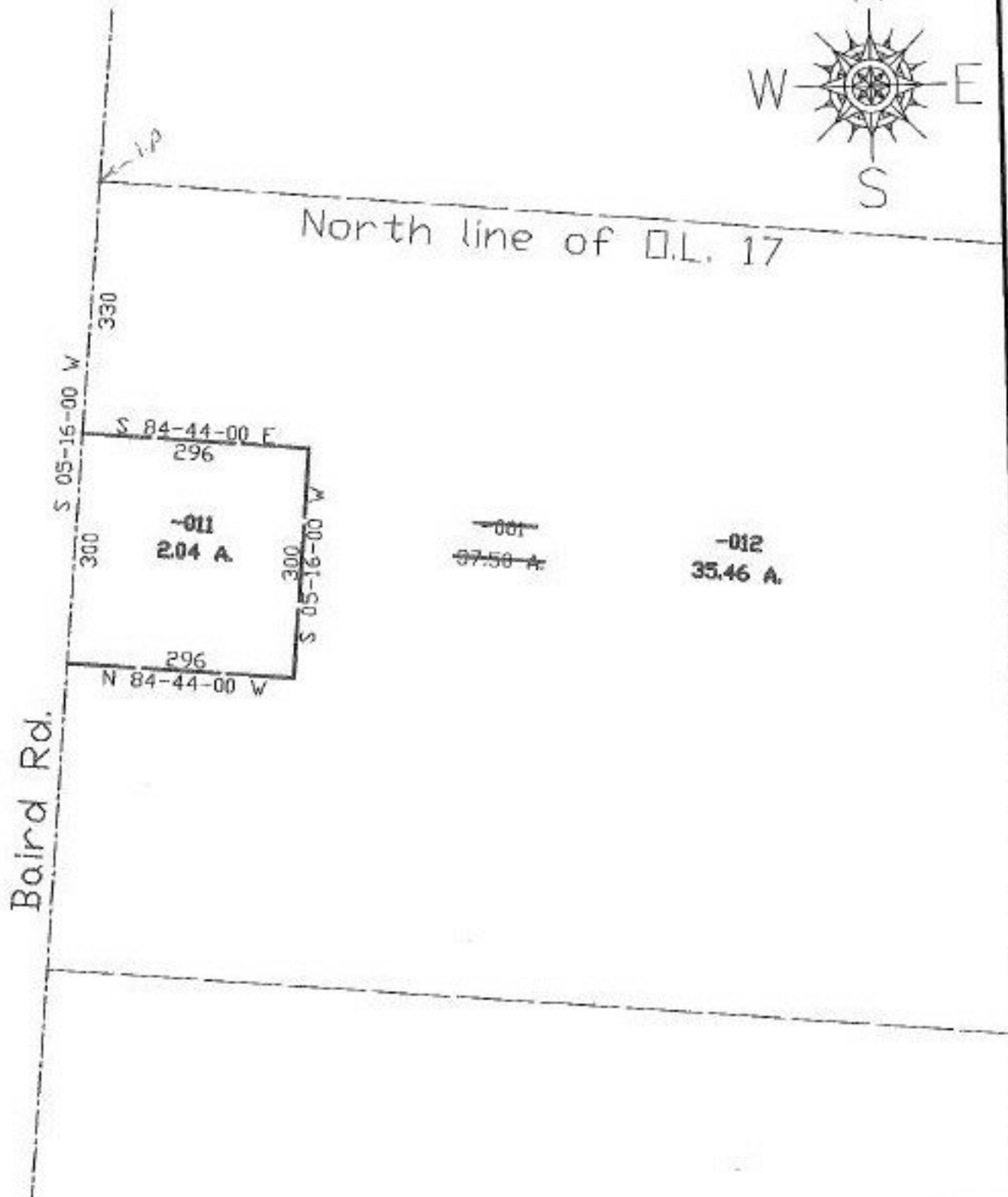


PARENT PARCEL: 08-13-017-000-001

CHILD PARCEL: 08-13-017-000-011, 012

STARTING POINT: c.L. of Baird Rd. & N. line of O.L. 17

NO. 22466



SPLITS/DEEDS PROCESSED

LORAIN COUNTY TAX MAP DEPARTMENT
226 MIDDLE AVE. ELYRIA, OHIO

SURVEYED BY: John Pozynak

CLOSURE: 0.00:10.000

MAP PAGE(S): 8-f

APPROVED BY: kac DATE: 3/16/98

SCALE: 1" = 200' PRIOR INSTRUMENT: #970502369