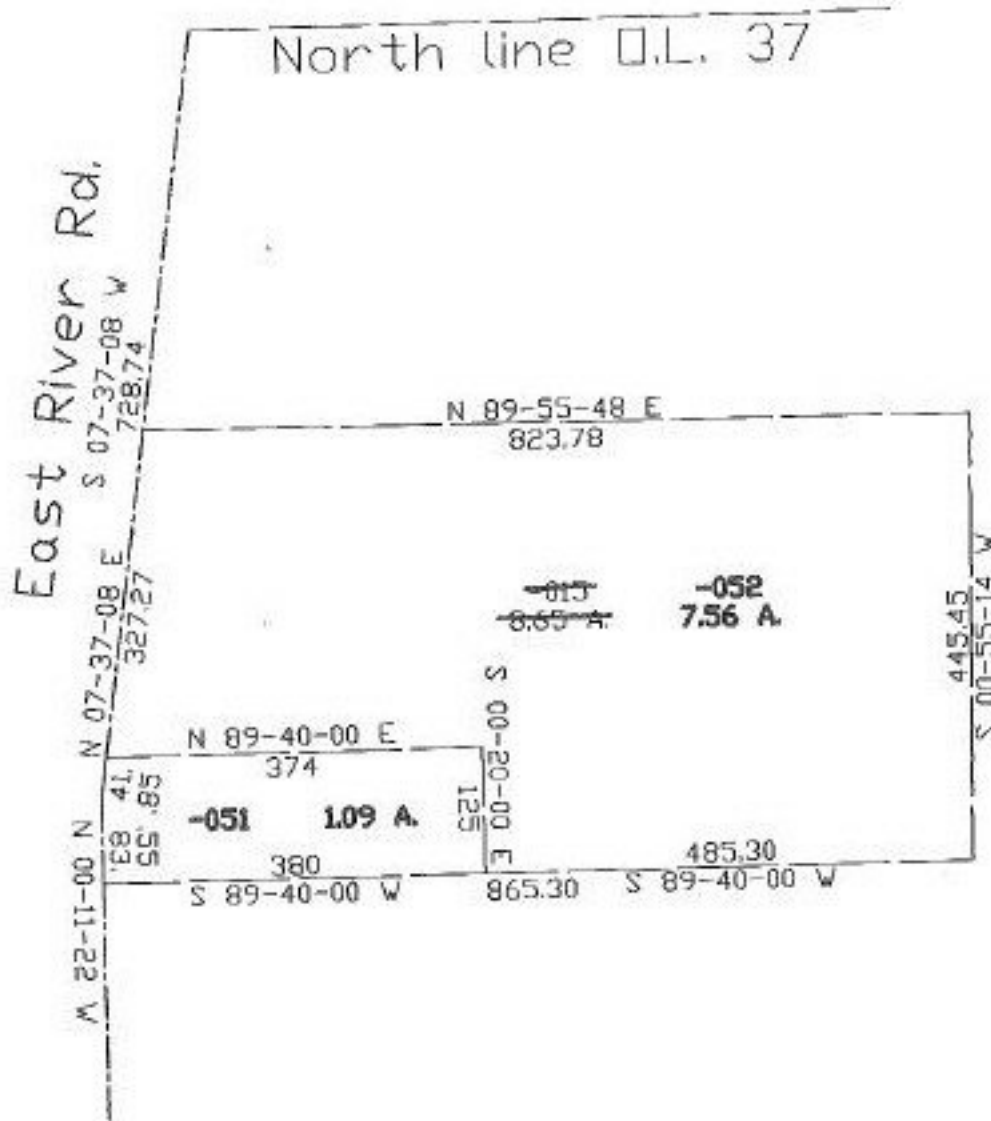


PARENT PARCEL: 12-00-037-000-015

CHILD PARCEL: 12-00-037-000-051, 052

STARTING POINT: c. of East River Rd. & N. line of Q.L. 37

NO. 22465



**SPLITS/DEEDS PROCESSED**  
 LORAIN COUNTY TAX MAP DEPARTMENT  
 226 MIDDLE AVE. ELYRIA, OHIO

SURVEYED BY: Eric Nelson  
 CLOSURE: 0.03:10,000  
 MAP PAGE(S): 12-00-037-8  
 APPROVED BY: koc DATE: 3/16/98  
 SCALE: 1" = 200' PRIOR INSTRUMENT: