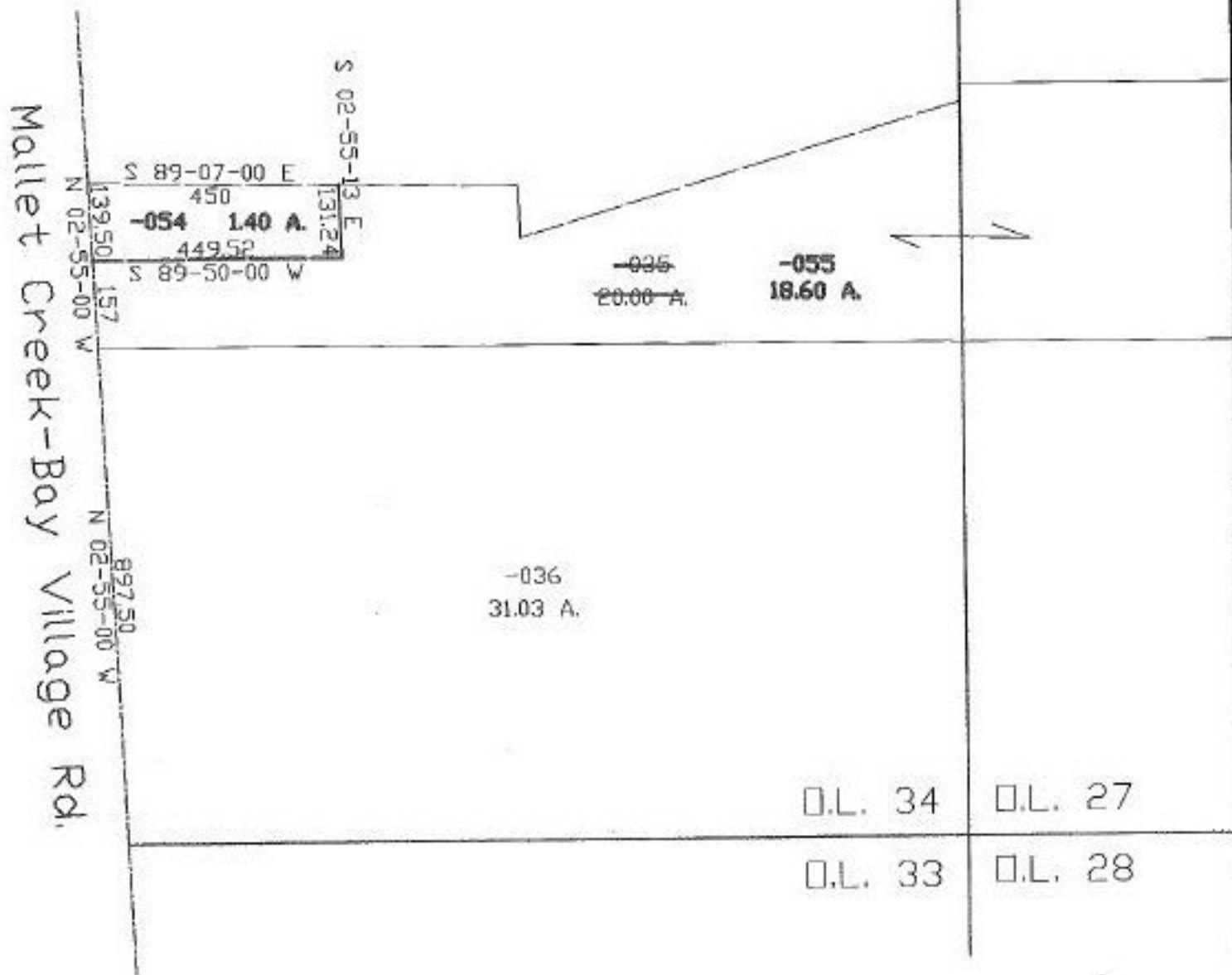


PARENT PARCEL: 12-00-034-000-035

CHILD PARCEL: 12-00-034-000-054, 055

STARTING POINT: c.l. of Mallet Creek-Bay Village Rd. & s. line of O.L. 34

NO. 22463



SPLITS/DEEDS PROCESSED
 LORAIN COUNTY TAX MAP DEPARTMENT
 226 MIDDLE AVE. ELYRIA, OHIO

SURVEYED BY: John Pozywak
 CLOSURE: 0.08:10,000
 MAP PAGE(S): 12-6
 APPROVED BY: kac DATE: 3/13/98
 SCALE: 1" = 300' PRIOR INSTRUMENT: DV 1358/66