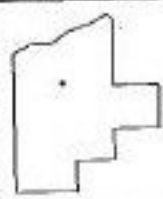
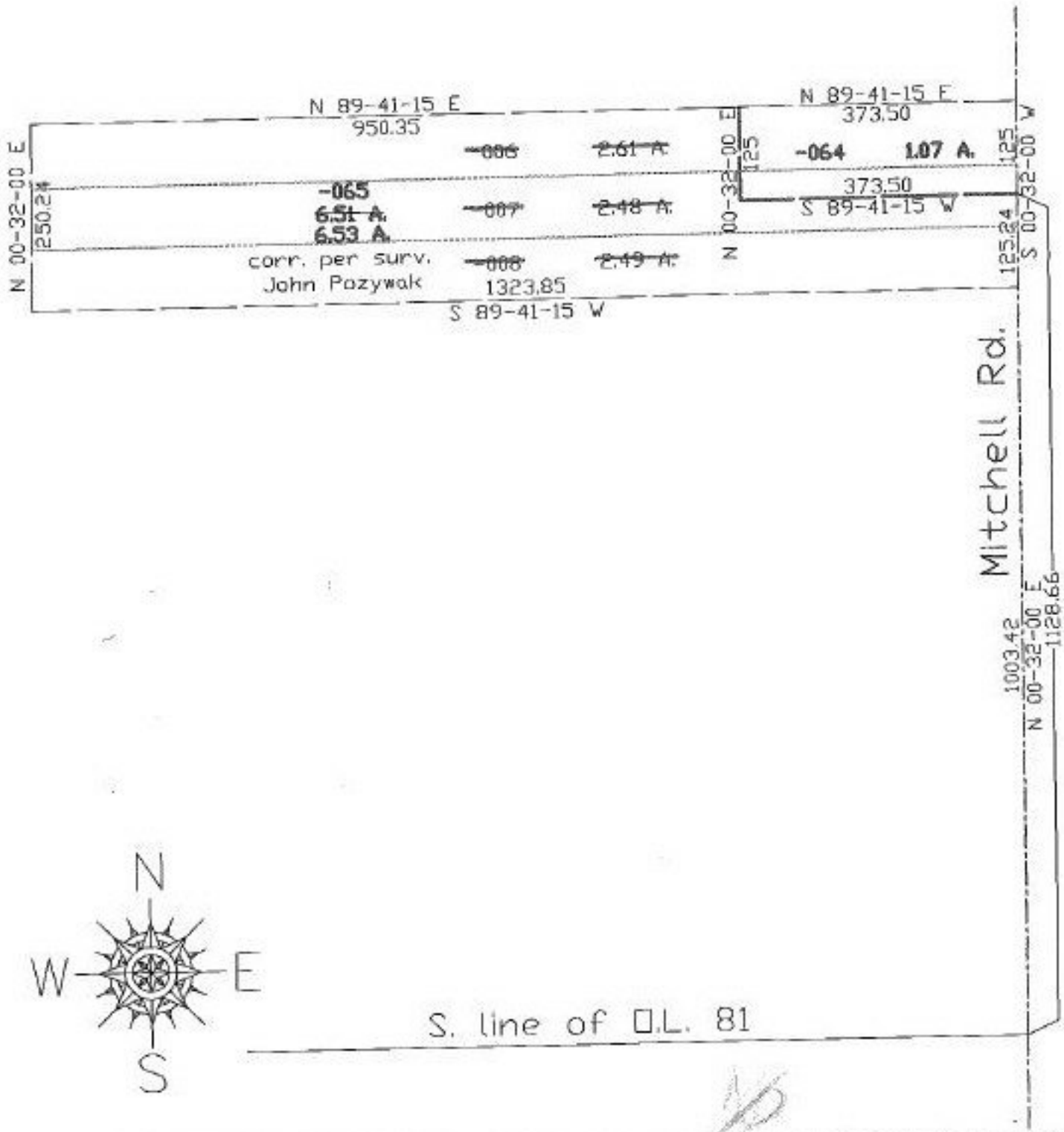


PARENT PARCEL: 12-00-081-000-006, 007, 008
 CHILD PARCEL: 12-00-081-000-064, 065
 STARTING POINT: s. line of Q.L. 81 & ct. of Mitchell Rd.

NO. 22455



SPLITS/DEEDS PROCESSED
 LORAIN COUNTY TAX MAP DEPARTMENT
 226 MIDDLE AVE. ELYRIA, OHIO

SURVEYED BY: John Pozywak
 CLOSURE: 0.00:10.000
 MAP PAGE(S): 12-00-081-A
 APPROVED BY: koc DATE: 2/28/98
 SCALE: 1" = 200' PRIOR INSTRUMENT: DV 1119/871