

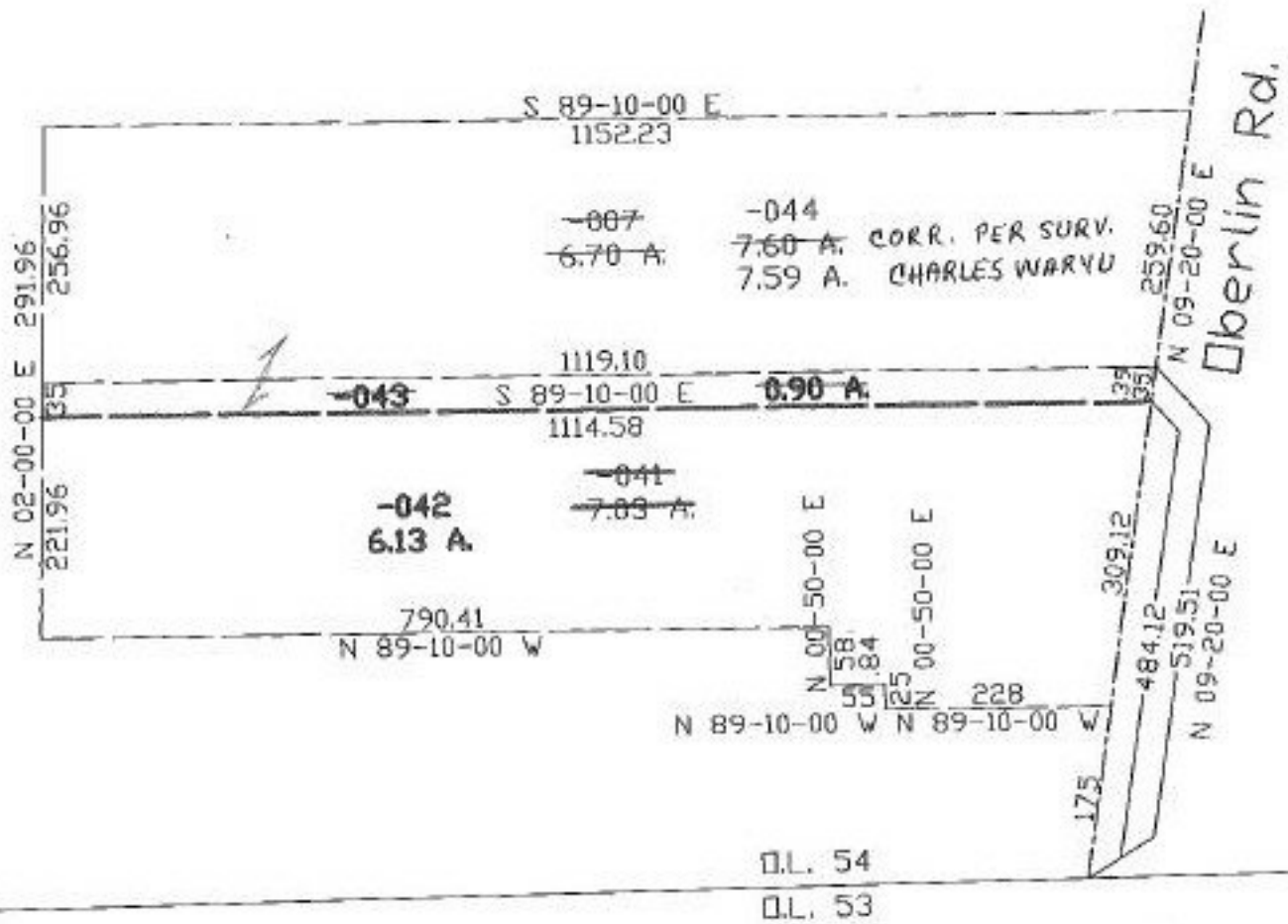
PARENT PARCEL: 05-00-054-000-007, 041  
 CHILD PARCEL: 05-00-054-000-042, 043, 044  
 STARTING POINT: cl. of Oberlin Rd. & s. line of O.L. 54

NO. 22454

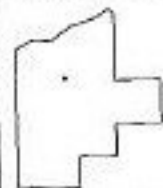
Prior instrument:  
 -007 1049/1216  
 -041 OR 1216/336



259.60  
 339.12



TS  
 4-29-99



**SPLITS/DEEDS PROCESSED**  
 LORAIN COUNTY TAX MAP DEPARTMENT  
 226 MIDDLE AVE. ELYRIA, OHIO

SURVEYED BY: Charles P. Waryu  
 CLOSURE: 0.53:10.000  
 MAP PAGE(S): 5-6  
 APPROVED BY: kac DATE: 03/11/98  
 SCALE: 1" = 200' PRIOR INSTRUMENT: OR 1216/336