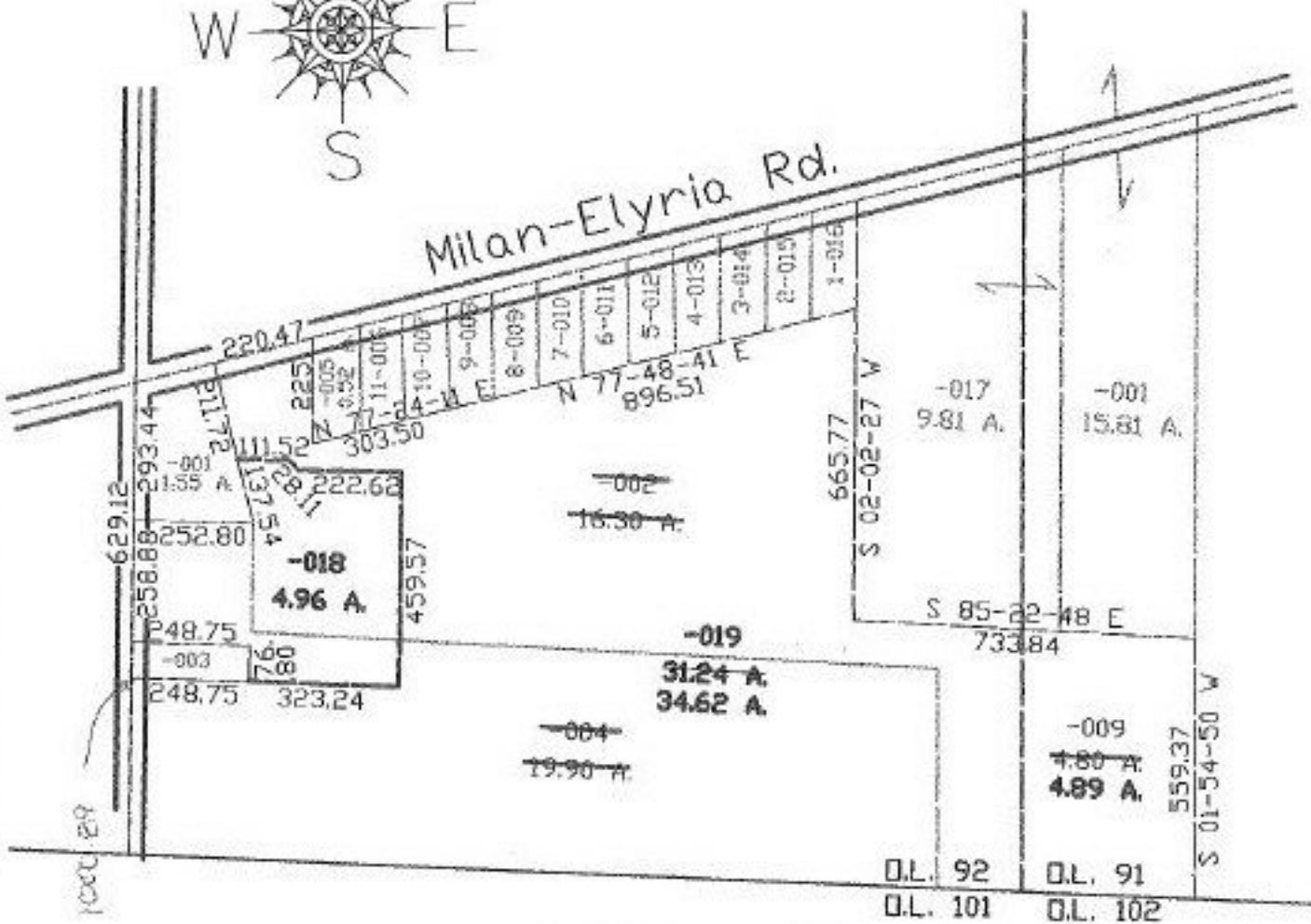


PARENT PARCEL: 08-00-091-000-009, 08-00-092-104-002, 004,
 08-00-101-000-006, 007, 08-00-102-000-001
 CHILD PARCEL: 08-00-091-000-009, 08-00-092-104-018, 019
 08-00-101-000-006, 007, 08-00-102-000-001
 STARTING POINT: c.l. of Milan-Elyria Rd. & c.l. of Vermilion Rd.

NO. 22449



SHEET (1) OF (2)

1" = 100'

VS
4-2-98



SPLITS/DEEDS PROCESSED
 LORAIN COUNTY TAX MAP DEPARTMENT
 228 MIDDLE AVE. ELYRIA, OHIO

SURVEYED BY: Phillip A. Rosebeck
 CLOSURE: 0.04:10.000
 MAP PAGE(S): B-C, 08-00-092-8
 APPROVED BY: kac DATE: 2/26/98
 SCALE: 1" = 400' PRIOR INSTRUMENT: 978/669