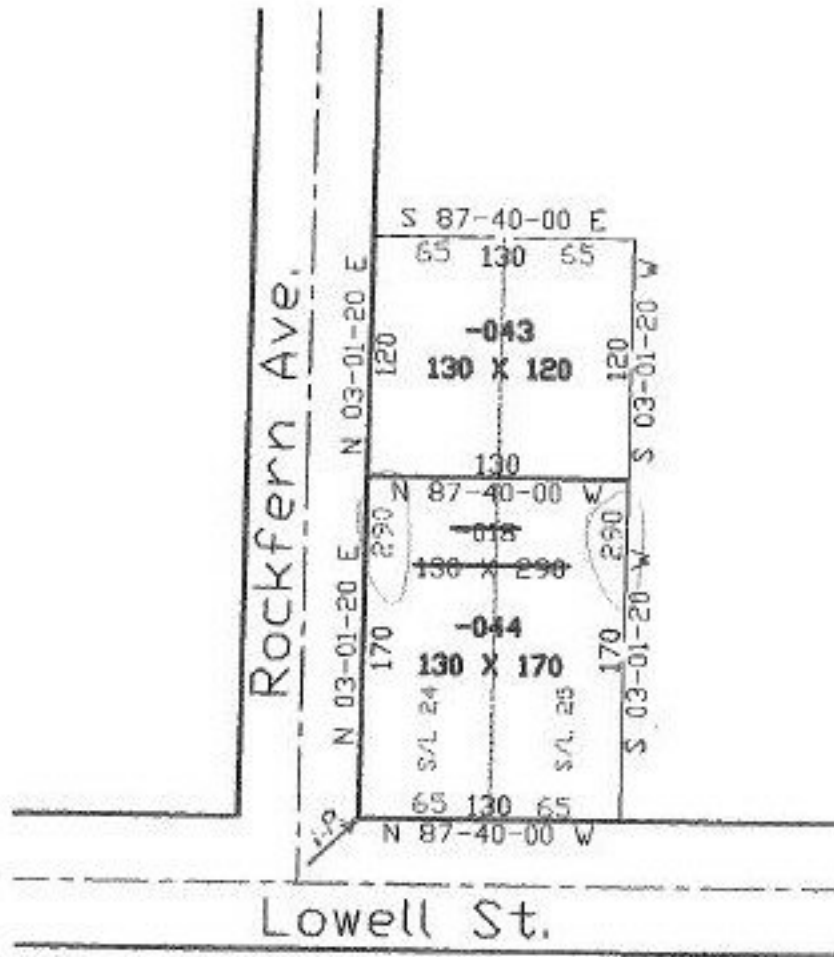


PARENT PARCEL: 06-24-026-115-018

CHILD PARCEL: 06-24-026-115-043, 044

STARTING POINT: N. line of Lowell St. & E. line of Rockfern Ave.

NO. 22446



SPLITS/DEEDS PROCESSED
 LORAIN COUNTY TAX MAP DEPARTMENT
 226 MIDDLE AVE. ELYRIA, OHIO

SURVEYED BY: Rodger G. Simon
 CLOSURE: 0.00:10.000
 MAP PAGE(S): 6-97
 APPROVED BY: kac DATE: 2/26/98
 SCALE: 1" = 100' PRIOR INSTRUMENT: 1352/536