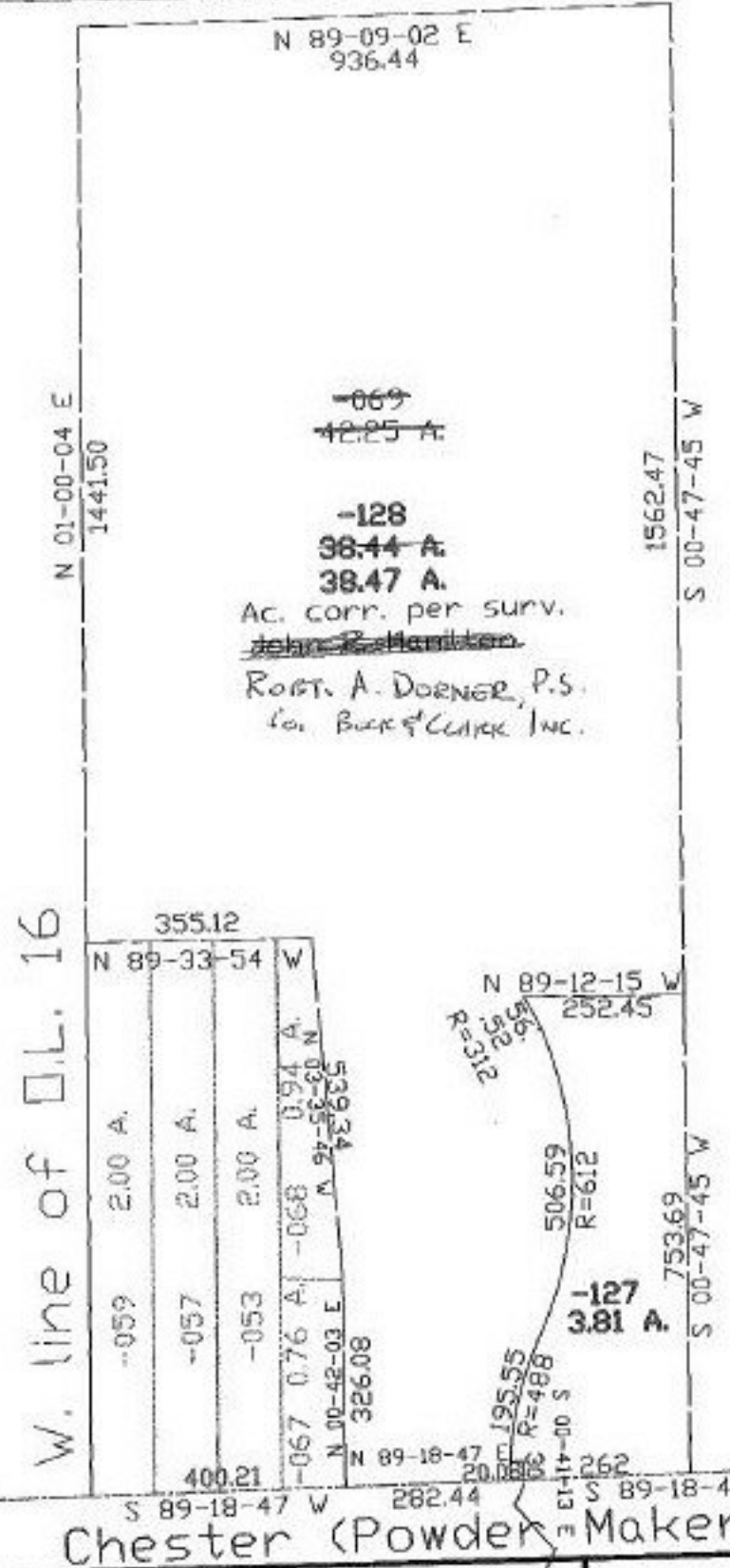


PARENT PARCEL: 04-00-016-101-069

CHILD PARCEL: 04-00-016-101-127, 128

STARTING POINT: w. line of O.L. 16 & cl. of Chester (Powder Maker) Rd.

NO. 22444



W. line of O.L. 16

Chester (Powder Maker) Rd.



SPLITS/DEEDS PROCESSED
 LORAIN COUNTY TAX MAP DEPARTMENT
 226 MIDDLE AVE. ELYRIA, OHIO

SURVEYED BY: Robert A. Dörner
 CLOSURE: 0.41:10,000
 MAP PAGE(S): 04-00-016-E & A
 APPROVED BY: kac DATE: 2/25/98
 SCALE: 1" = 300' PRIOR INSTRUMENT: Vol. 1278/211