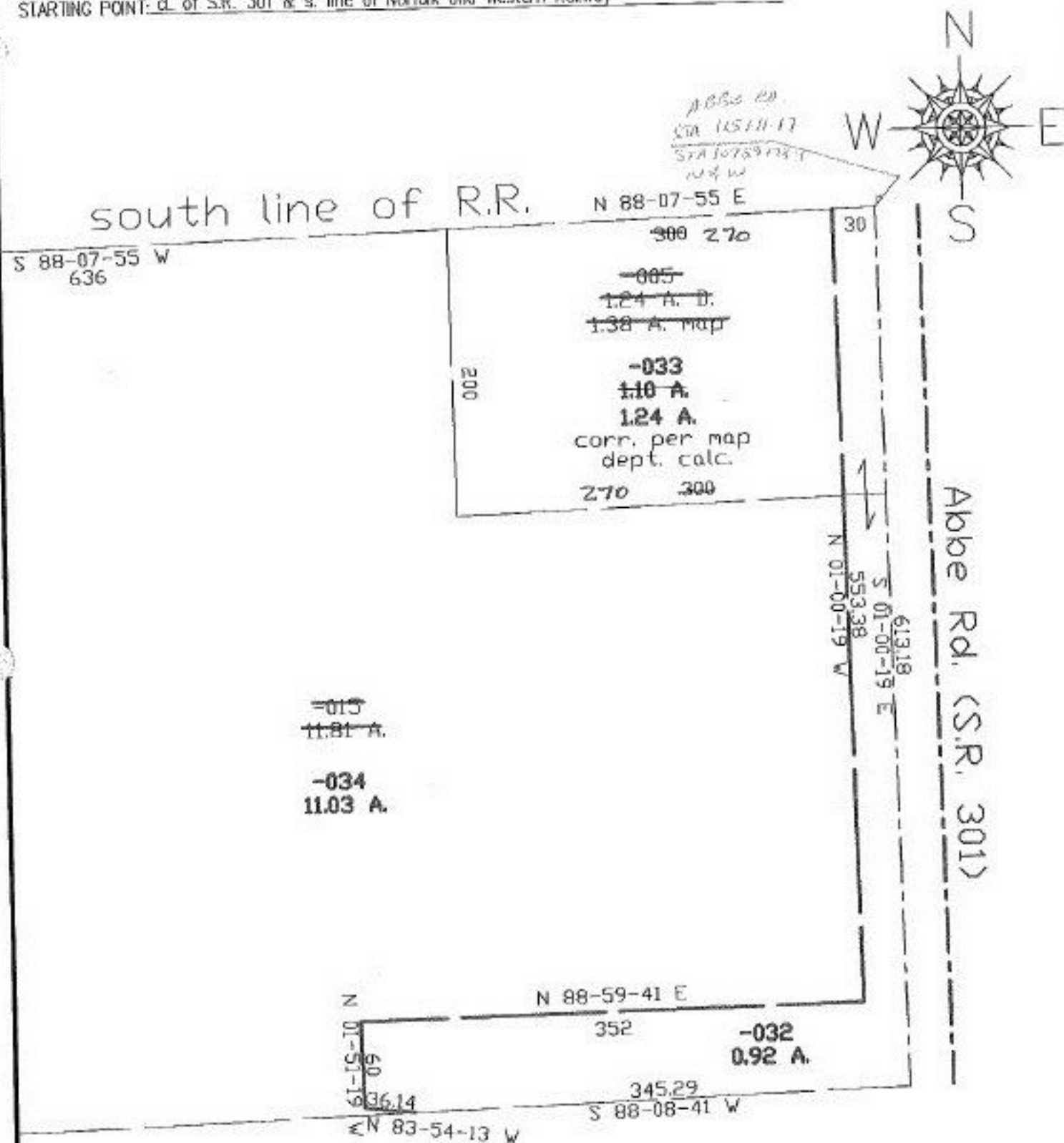


PARENT PARCEL: 03-00-019-000-005, 015
CHILD PARCEL: 03-00-019-000-032, 033, 034
STARTING POINT: c. of S.R. 301 & s. line of Norfolk and Western Railway

NO. 22420



SURVEYED BY: Raymond W. Hoas
CLOSURE: 0.06:10.000
MAP PAGE(S): 03-00-019-B
APPROVED BY: kac DATE: 1/28/98
SCALE: 1" = 100' PRIOR INSTRUMENT: 1079/114

SPLITS/DEEDS PROCESSED
LORAIN COUNTY TAX MAP DEPARTMENT
226 MIDDLE AVE. ELYRIA, OHIO