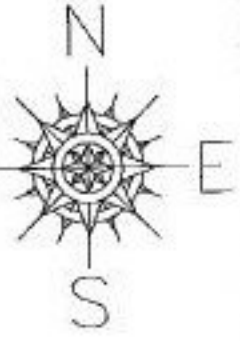
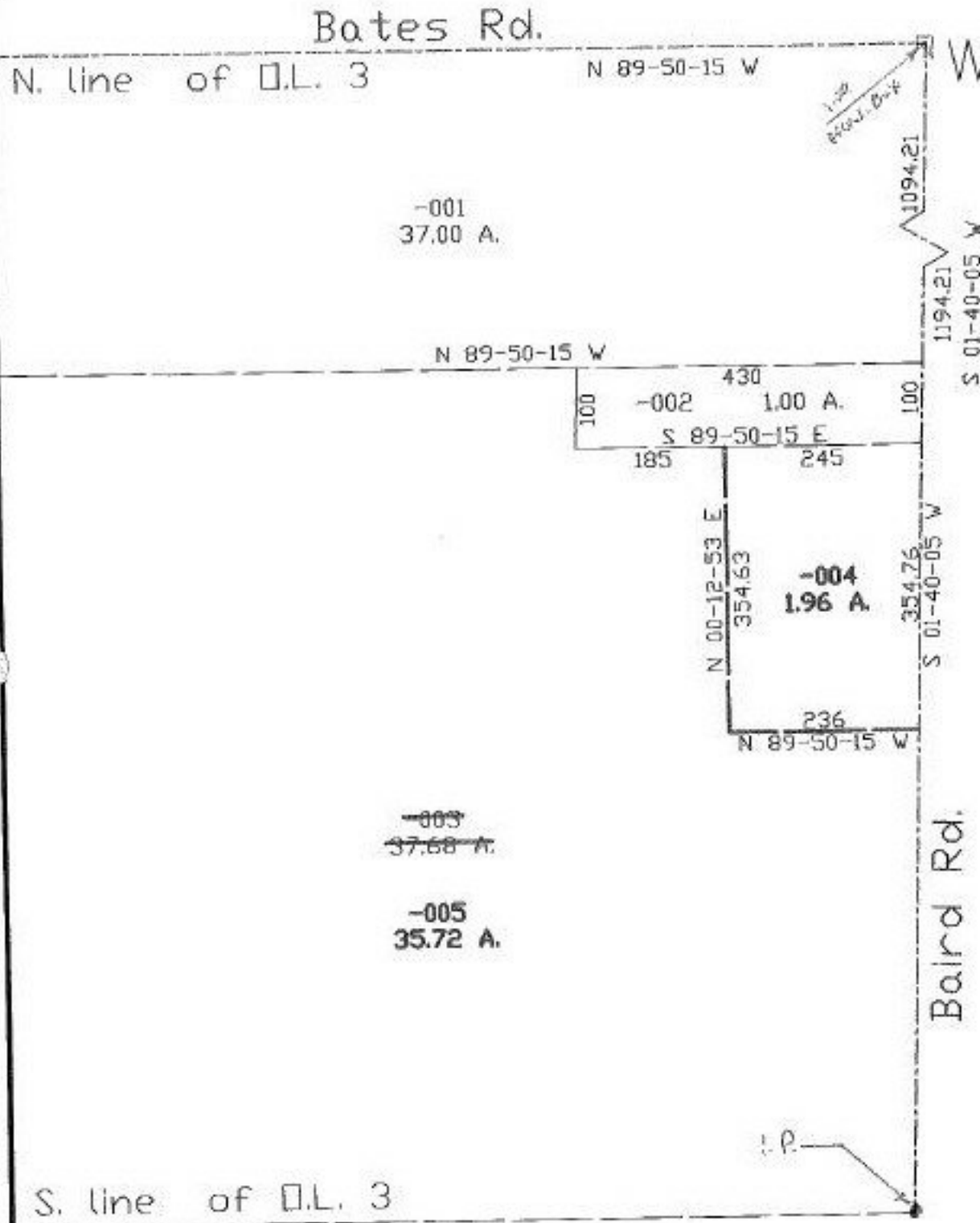


PARENT PARCEL: 13-11-003-000-003
CHILD PARCEL: 13-11-003-000-004, 005
STARTING POINT: cl. of Baird Rd. & cl. of Bates Rd.

NO. 22419



SPLITS/DEEDS PROCESSED
LORAIN COUNTY TAX MAP DEPARTMENT
226 MIDDLE AVE. ELYRIA, OHIO

SURVEYED BY: Rodger G. Simon
CLOSURE: 0.07:10.000
MAP PAGE(S): 13-8
APPROVED BY: kac DATE: 1/28/98
SCALE: 1" = 200' PRIOR INSTRUMENT: #97496310