

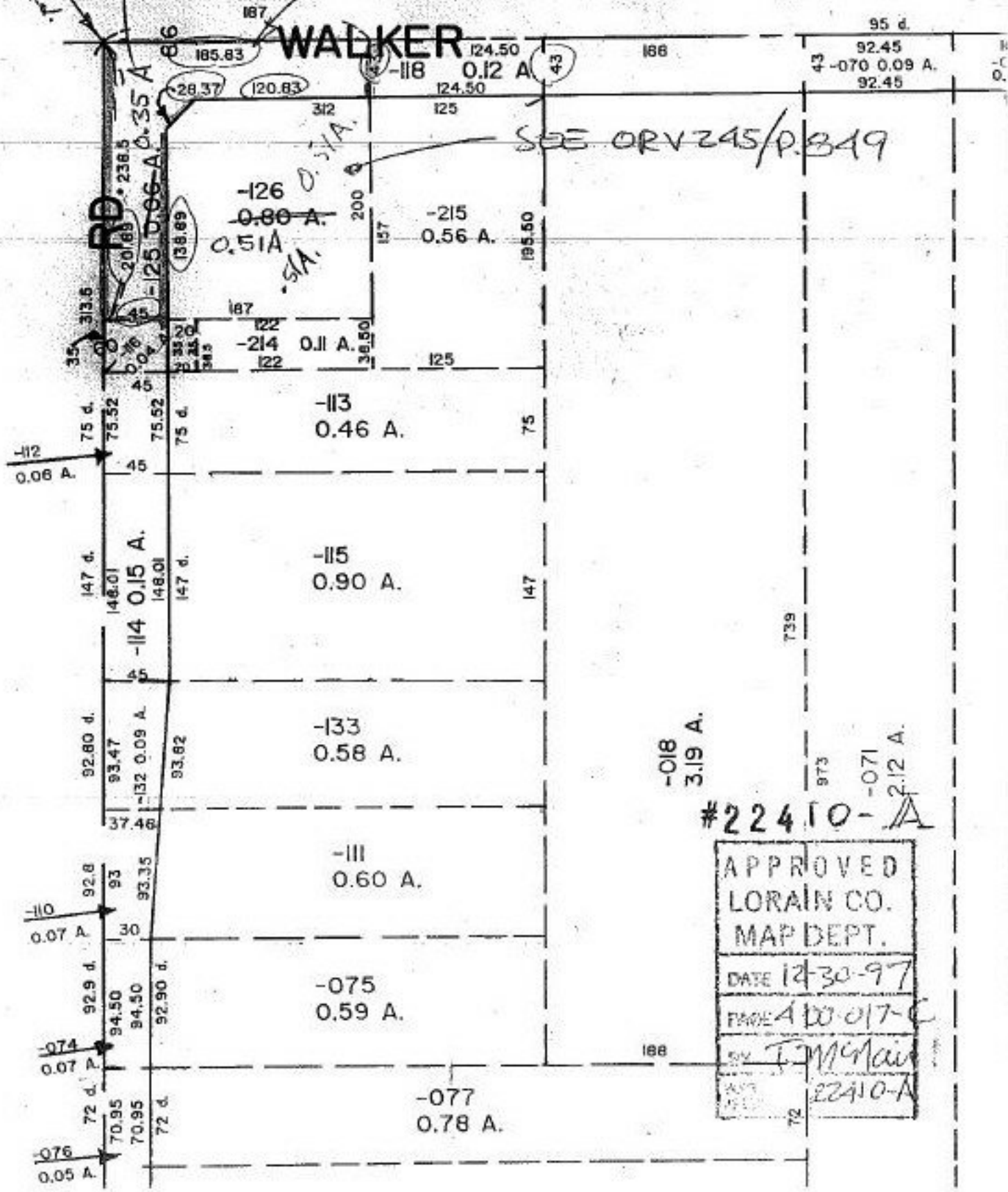
#22410-A

CL. INT. 153+77.70 SR 83
Sta. 131 + 21.45 Walker Rd.

245/849

7955-
9085

SEE DV 1380/512



SEE ORV 245/P. 849

#22410-A

APPROVED
LORAIN CO.
MAP DEPT.
DATE 12-30-97
PAGE 4 OF 017-C
BY J. McMain
22410-A