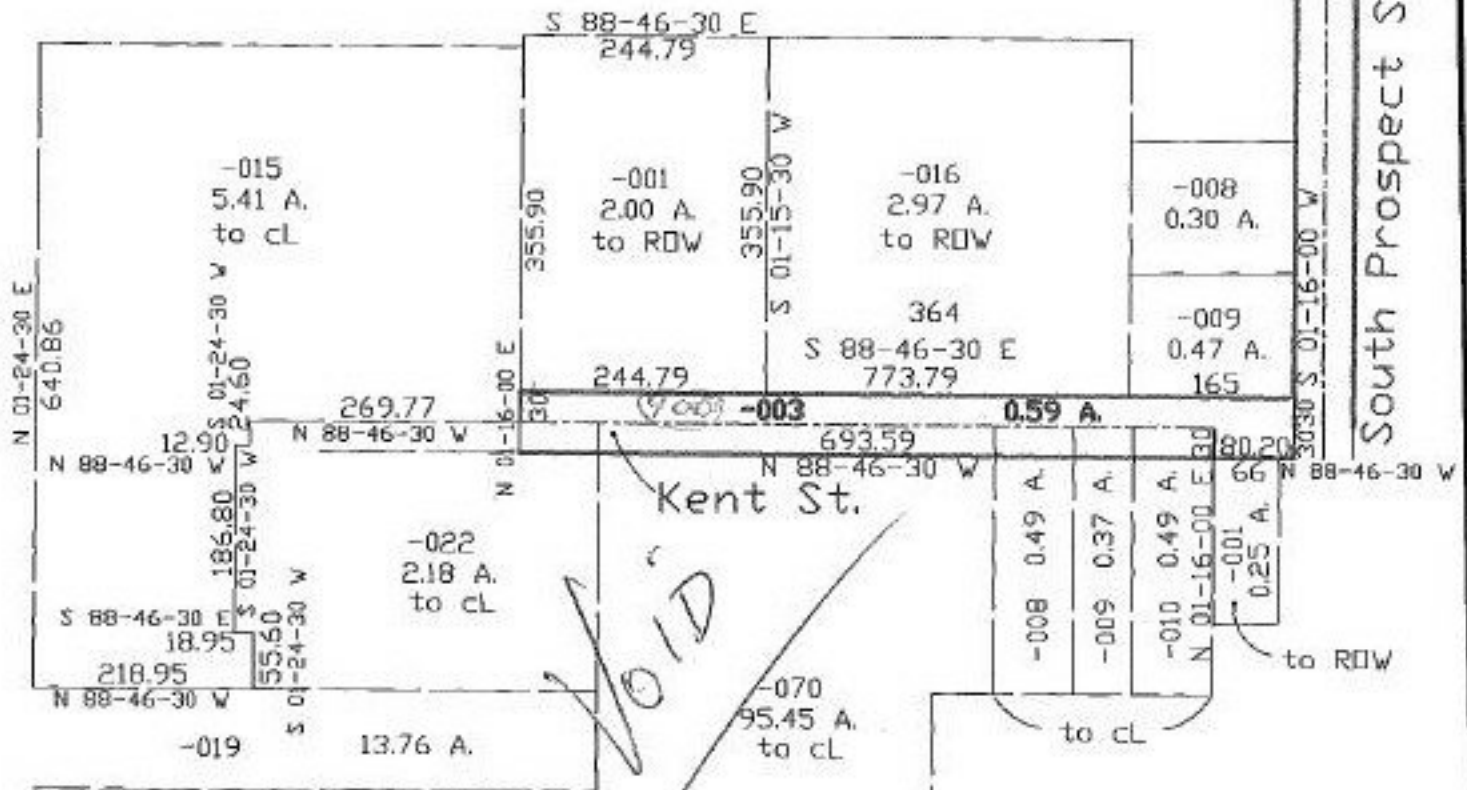


PARENT PARCEL: Parcel never had an assigned number
 CHILD PARCEL: 18-00-026-900-003
 STARTING POINT: cL of Kent St. & west ROW of South Prospect St.

NO. 22406



ADD TO DUPLICATE



VOID

2/5/98
 Doc. No. 980515628

43-98



SPLITS/DEEDS PROCESSED
 LORAIN COUNTY TAX MAP DEPARTMENT
 226 MIDDLE AVE. ELYRIA, OHIO

SURVEYED BY: Eric J. Nelson
 CLOSURE: 0.00:10.000
 MAP PAGE(S): 18-00-026-B DATE: 1/22/98
 APPROVED BY: koc SCALE: 1" = 200'
 PRIOR INSTRUMENT: DV 510/569 DV 512/287