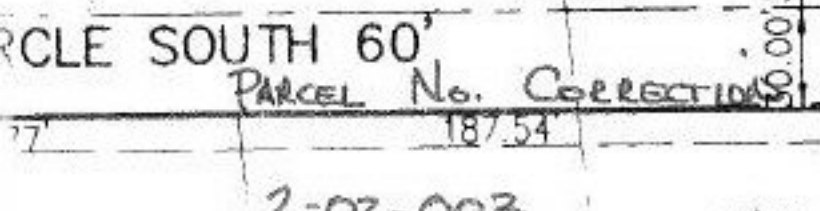
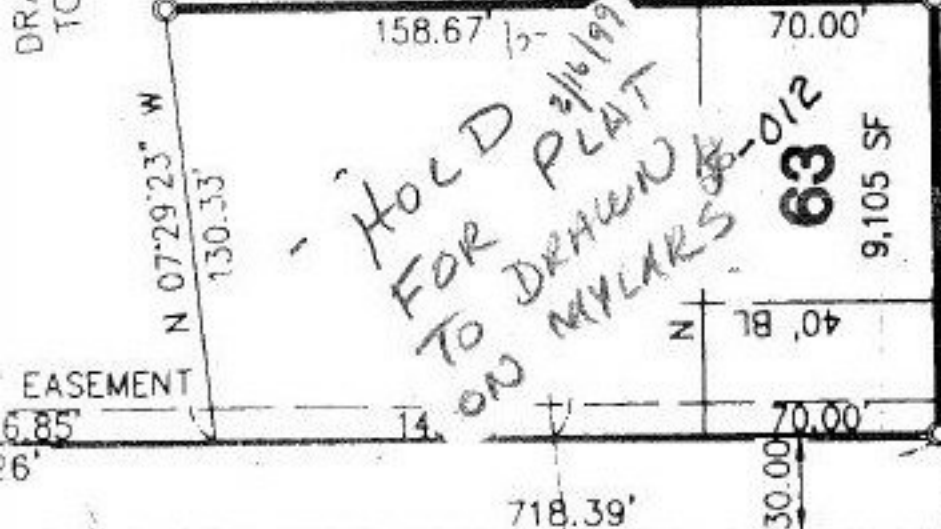
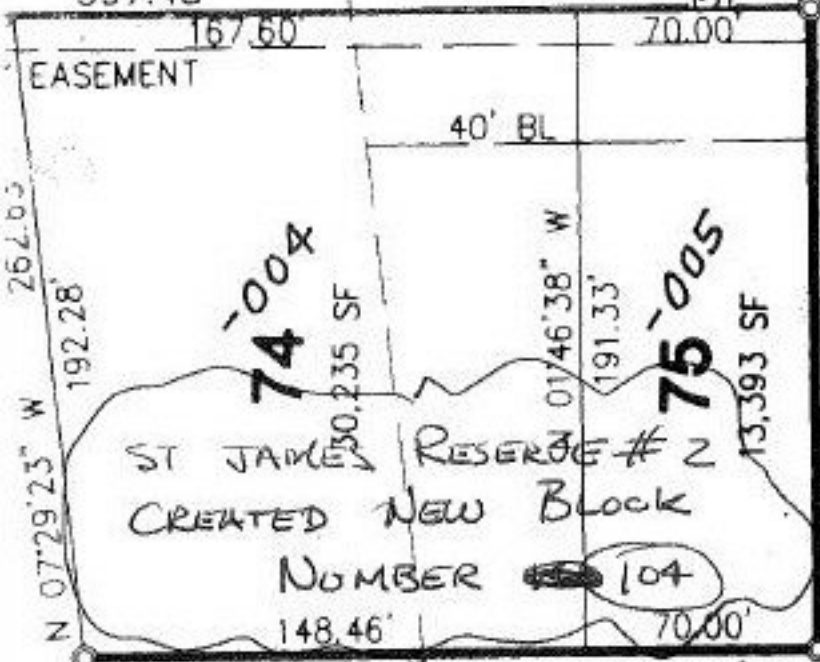


ARCLE NORTH 60'

397.48'



RESERVE SUB. NO. 1006  
 32  
 1007  
 30  
 1008  
 30  
 1009  
 29  
 1010  
 28  
 1011  
 27  
 ST. JAMES PV.

591.77'

JAMES BLVD 60'

P.P. No. CORRECTIONS 2402X

APPROVED	ST. JAMES
LORAIN CO. MAP DEPT	
SITE	1-22-98
PAGE	2-02-003
BY	F. Colbert
	#22402X

2-02-003