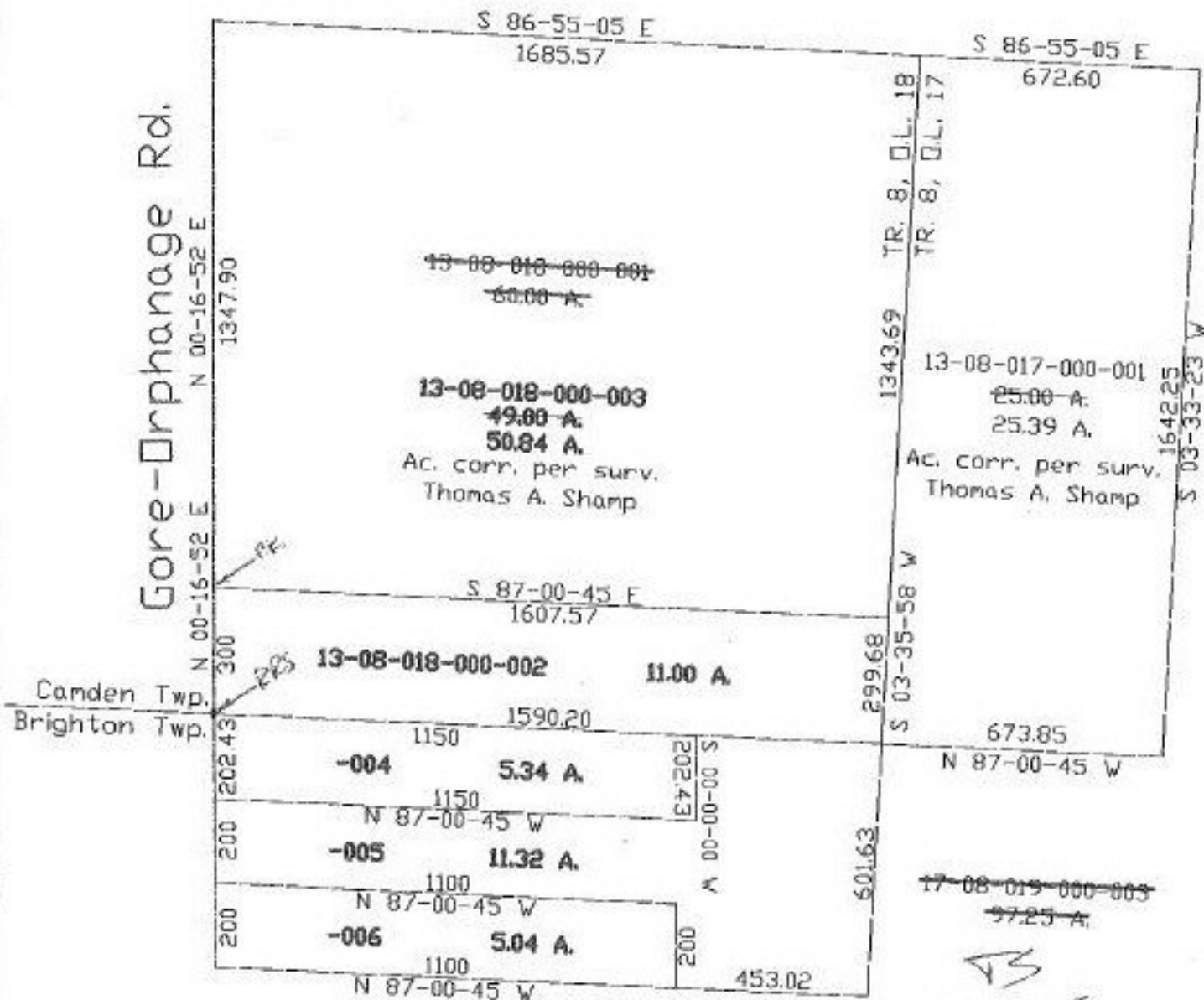


PARENT PARCEL: 13-08-017-000-001, 13-08-018-000-001*
 CHILD PARCEL: 13-08-018-000-002, 003, 13-08-017-000-001**
 STARTING POINT: cl. of Gore-Orphanage Rd. & lwp. line between Camden and Brighton
 *17-08-019-000-003
 **17-08-019-000-004 thru 012, 17-08-036-000-019

NO. 22400



SHEET (1) OF (2)

3-10-98



SPLITS/DEEDS PROCESSED
 LORAIN COUNTY TAX MAP DEPARTMENT
 226 MIDDLE AVE. ELYRIA, OHIO

SURVEYED BY: Thomas A. Sharp
 CLOSURE: 0.67-10.000
 MAP PAGE(S): 13-E, 17-A
 APPROVED BY: kac DATE: 1/7/98
 SCALE: 1" = 400' PRIOR INSTRUMENT: #970505561