

PARENT PARCEL: 17-08-019-000-003*

CHILD PARCEL: 17-08-019-000-004 thru 012, 17-08-036-000-019**

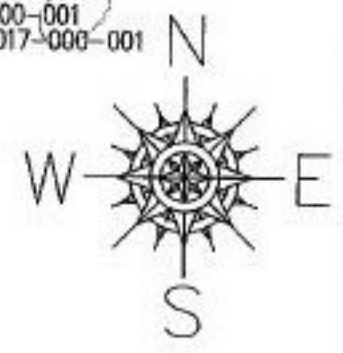
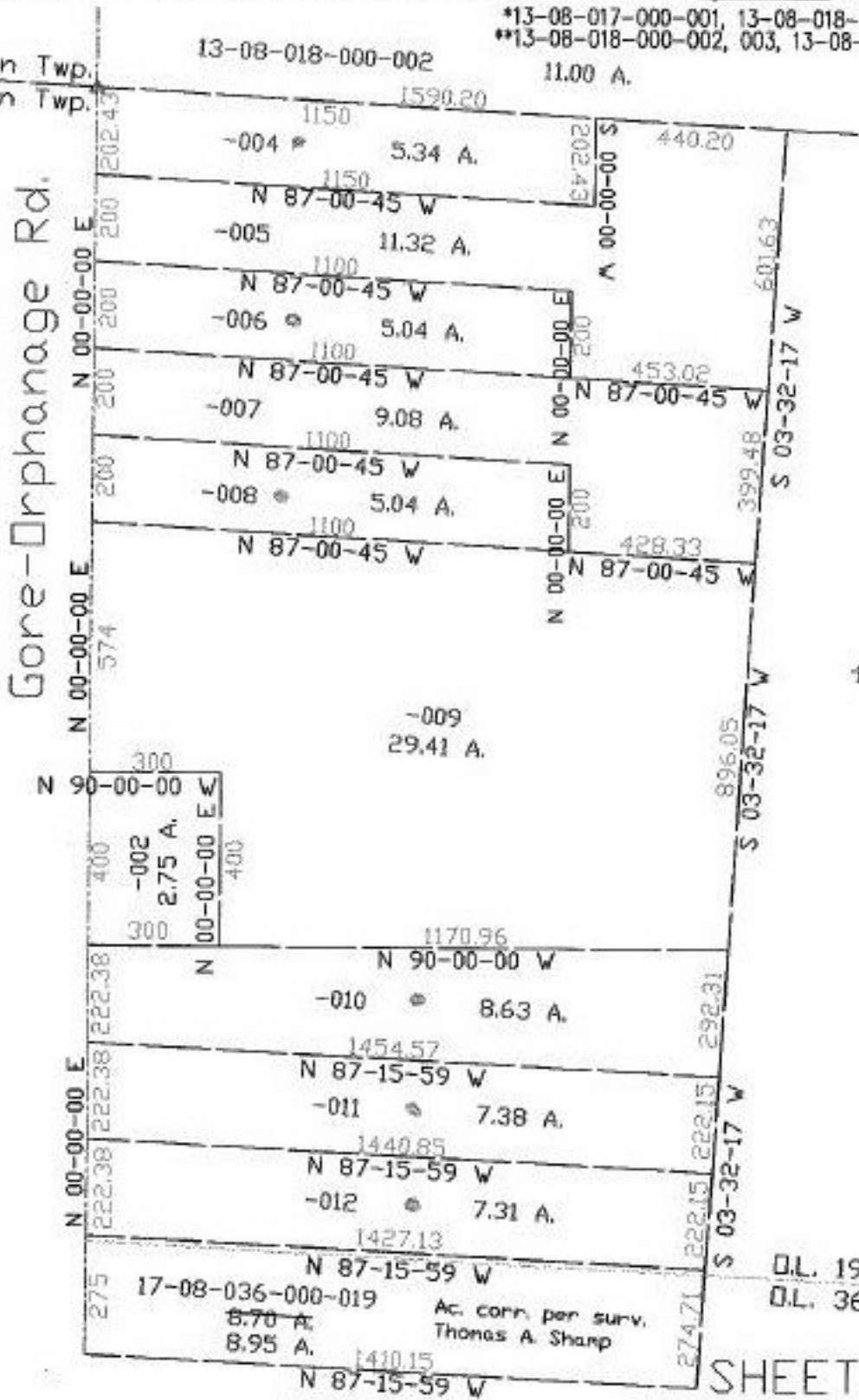
STARTING POINT: cl. of Gore-Orphanage Rd. & twp. line between Camden and Brighton

NO. 22400

*13-08-017-000-001, 13-08-018-000-001
**13-08-018-000-002, 003, 13-08-017-000-001

Camden Twp.
Brighton Twp.

Gore-Orphanage Rd.



17-08-019-000-003
97.25 A.

Copy

D.L. 19
D.L. 36

SHEET (2) OF (2)



SPLITS/DEEDS PROCESSED
LORAIN COUNTY TAX MAP DEPARTMENT
 226 MIDDLE AVE. ELYRIA, OHIO

SURVEYED BY: Thomas A. Sharp
 CLOSURE: 0.67:10.000
 MAP PAGE(S): 17-A
 APPROVED BY: kac DATE: 1/7/98
 SCALE: 1" = 400' PRIOR INSTRUMENT: #970505561