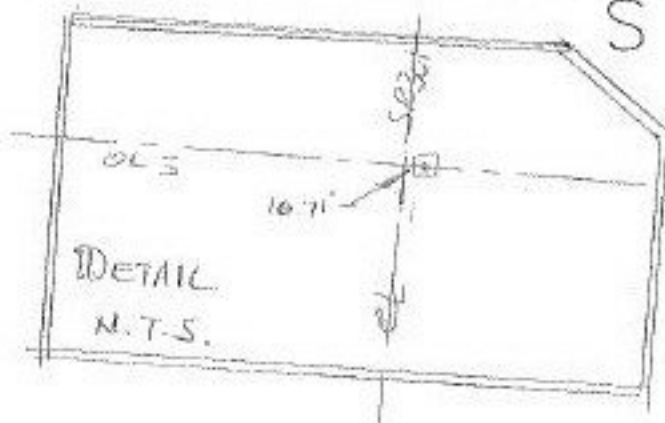


PARENT PARCEL: 15-00-005-000-001

CHILD PARCEL: 15-00-005-000-034, 035, 036

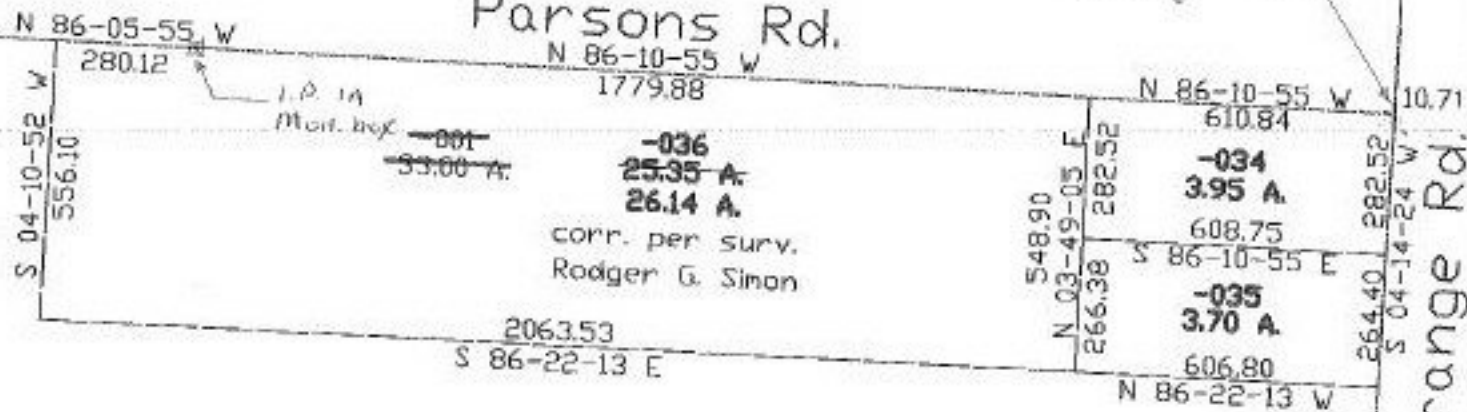
STARTING POINT: cL of Parsons Rd. at NE corner of O.L. 5

NO. 22393



N.E. CORNER  
O.L. 5

Parsons Rd.



JS  
4-3-98



**SPLITS/DEEDS PROCESSED**  
LORAIN COUNTY TAX MAP DEPARTMENT  
226 MIDDLE AVE. ELYRIA, OHIO

SURVEYED BY: Rodger G. Simon  
CLOSURE: 0.06:10.000  
MAP PAGE(S): 15-B  
APPROVED BY: kac DATE: 12/30/97  
SCALE: 1" = 400' PRIOR INSTRUMENT: 382/190