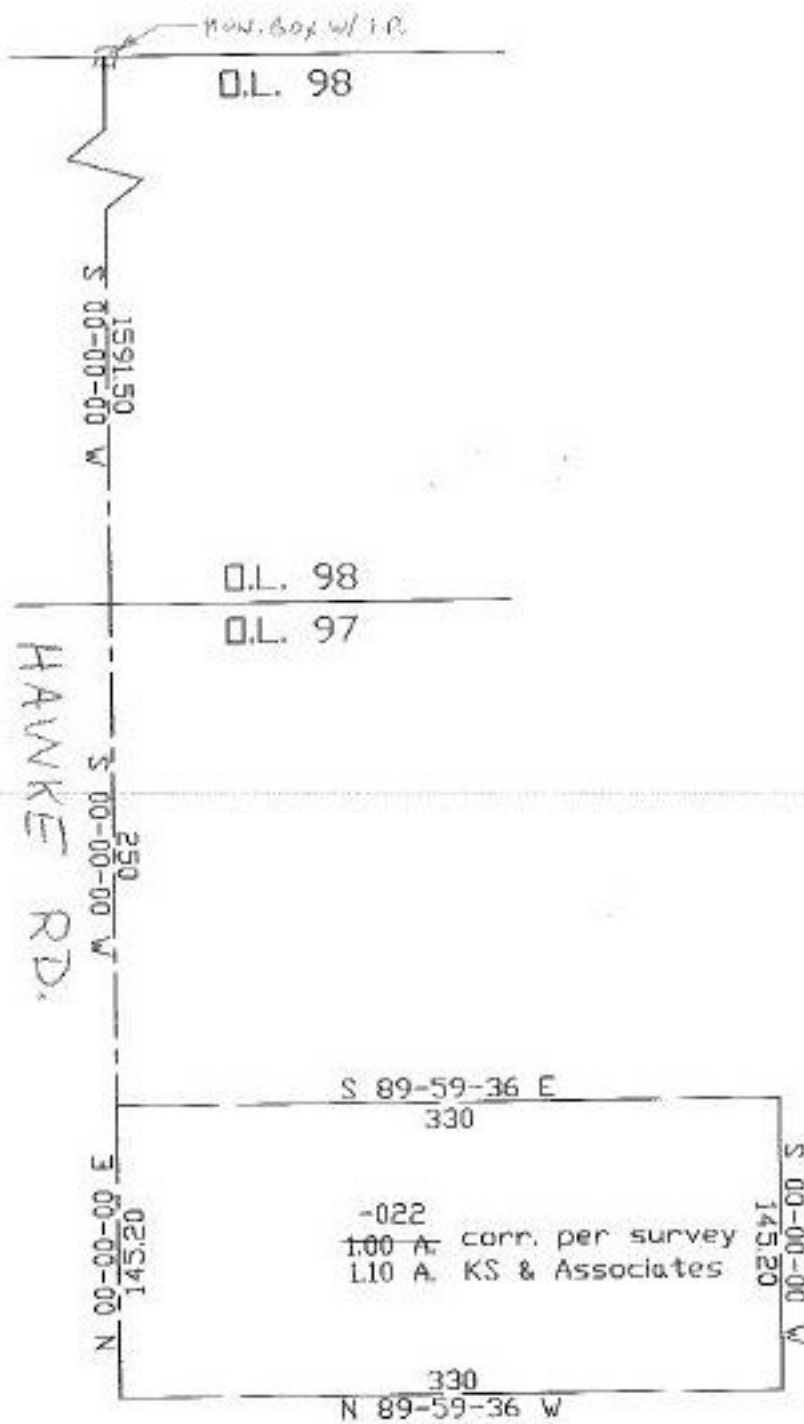


PARENT PARCEL: 12-00-097-000-022

CHILD PARCEL:

STARTING POINT: c.l. of Howke Rd. at NW corner of O.L. 97

NO. 22391-A



KS
2-26-98



SPLITS/DEEDS PROCESSED
LORAIN COUNTY TAX MAP DEPARTMENT
226 MIDDLE AVE. ELYRIA, OHIO

SURVEYED BY: KSA

CLOSURE: 0.00:10.000

MAP PAGE(S): 12-A

APPROVED BY: kac DATE: 12/30/97

SCALE: 1"=100' PRIOR INSTRUMENT: _____