

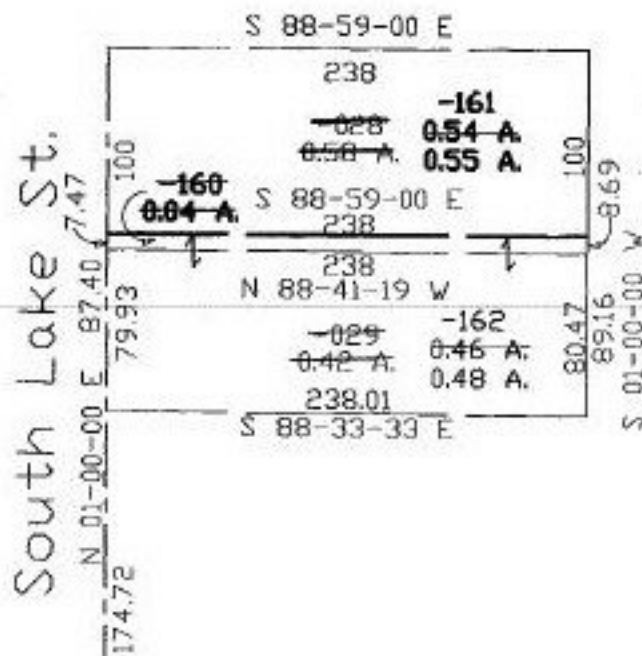
#22374

PARENT PARCEL: 05-00-017-000-028, 029

CHILD PARCEL: 05-00-017-000-160, 161, 162

STARTING POINT: c.l. of Charles Ave. & c.l. of South Lake St.

NO. 22374



Ac. corr. per survey
Rodger G. Simon

Charles Ave.

South Lake St.



SPLITS/DEEDS PROCESSED
LORAIN COUNTY TAX MAP DEPARTMENT
226 MIDDLE AVE. ELYRIA, OHIO

SURVEYED BY: Rodger G. Simon
CLOSURE: 011:10.000
MAP PAGE(S): 05-00-017-A
APPROVED BY: kac DATE: 12/15/97
SCALE: 1" = 100. PRIOR INSTRUMENT: CR 1094/843 & 853