

#22371-A

PARENT PARCEL: 06-24-058-000-016

CHILD PARCEL:

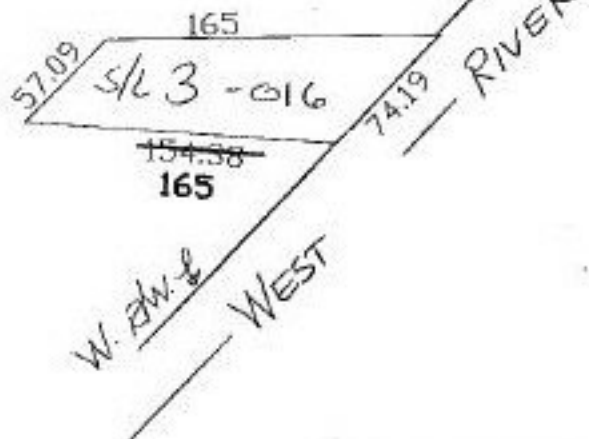
STARTING POINT:

NO. 22371-A



# SIZE CORRECTION

~~74 X 165~~ TAX MAP  
~~70 X 130~~ PARCEL SCREEN  
**74.91 X 165** CORR. PER DEED  
 970491748



**SPLITS/DEEDS PROCESSED**  
 LORAIN COUNTY TAX MAP DEPARTMENT  
 226 MIDDLE AVE. ELYRIA, OHIO

SURVEYED BY: \_\_\_\_\_  
 CLOSURE: \_\_\_\_\_  
 MAP PAGE(S): **6-100**  
 APPROVED BY: kac DATE: 12/15/97  
 SCALE: 1" = 100' PRIOR INSTRUMENT: DV 843/519