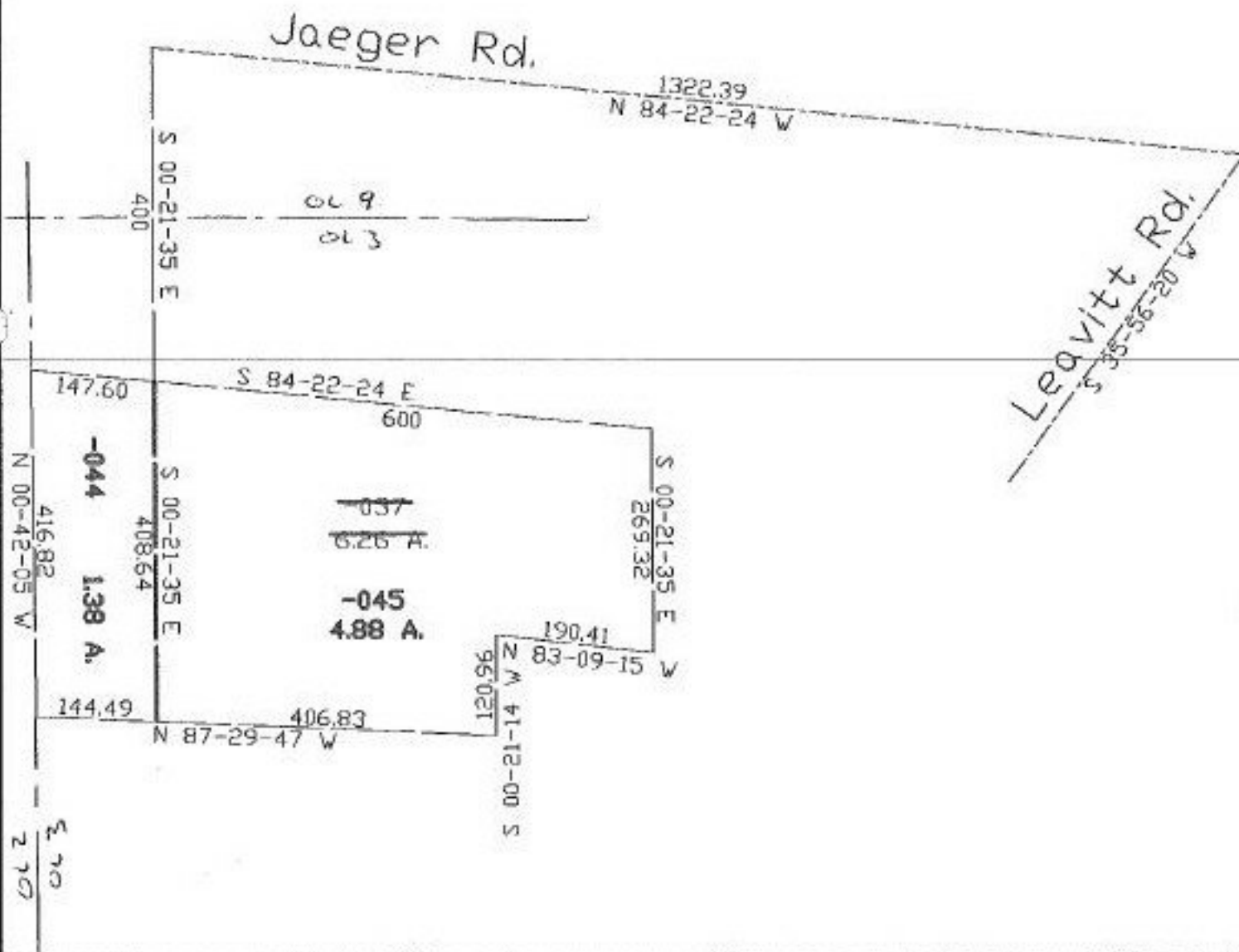


PARENT PARCEL: 02-02-003-101-037

CHILD PARCEL: 02-02-003-101-044, 045

STARTING POINT: c.l. of Jaeger Rd. & c.l. of Leavitt Rd.

NO. 22366 *FILED 1998*



**SPLITS/DEEDS PROCESSED**  
**LORAIN COUNTY TAX MAP DEPARTMENT**  
 226 MIDDLE AVE. ELYRIA, OHIO

SURVEYED BY: David L. Elwell  
 CLOSURE: 0.03:10.000  
 MAP PAGE(S): 02-02-003  
 APPROVED BY: kac DATE: 12/11/97  
 SCALE: 1" = 200' PRIOR INSTRUMENT: 97048059 B