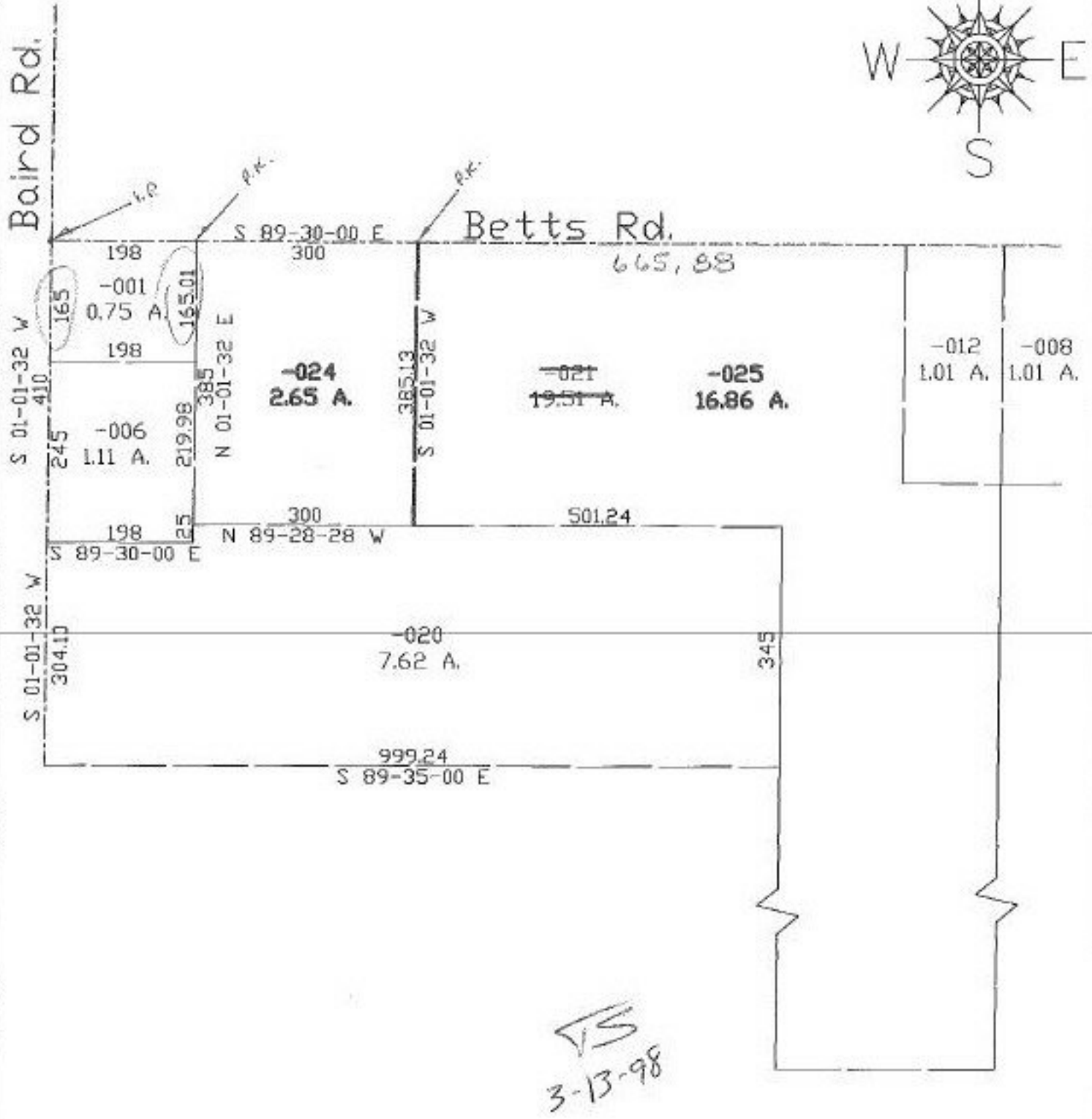


PARENT PARCEL: 13-09-039-000-021
 CHILD PARCEL: 13-09-039-000-024, 025
 STARTING POINT: cl. of Betts Rd. & cl. of Baird Rd.

NO. 22362

FILED 1998



SPLITS/DEEDS PROCESSED
 LORAIN COUNTY TAX MAP DEPARTMENT
 226 MIDDLE AVE. ELYRIA, OHIO

SURVEYED BY: Lorain County Engineer
 CLOSURE: 0.03; 10,000
 MAP PAGE(S): 13-F
 APPROVED BY: kac DATE: 12/9/97
 SCALE: 1" = 200' PRIOR INSTRUMENT: DV 1048/197