

PARENT PARCEL: 02-02-023-101-005, 006

CHILD PARCEL:

STARTING POINT: East line of O.L. 23 & cl. of Lake Rd.

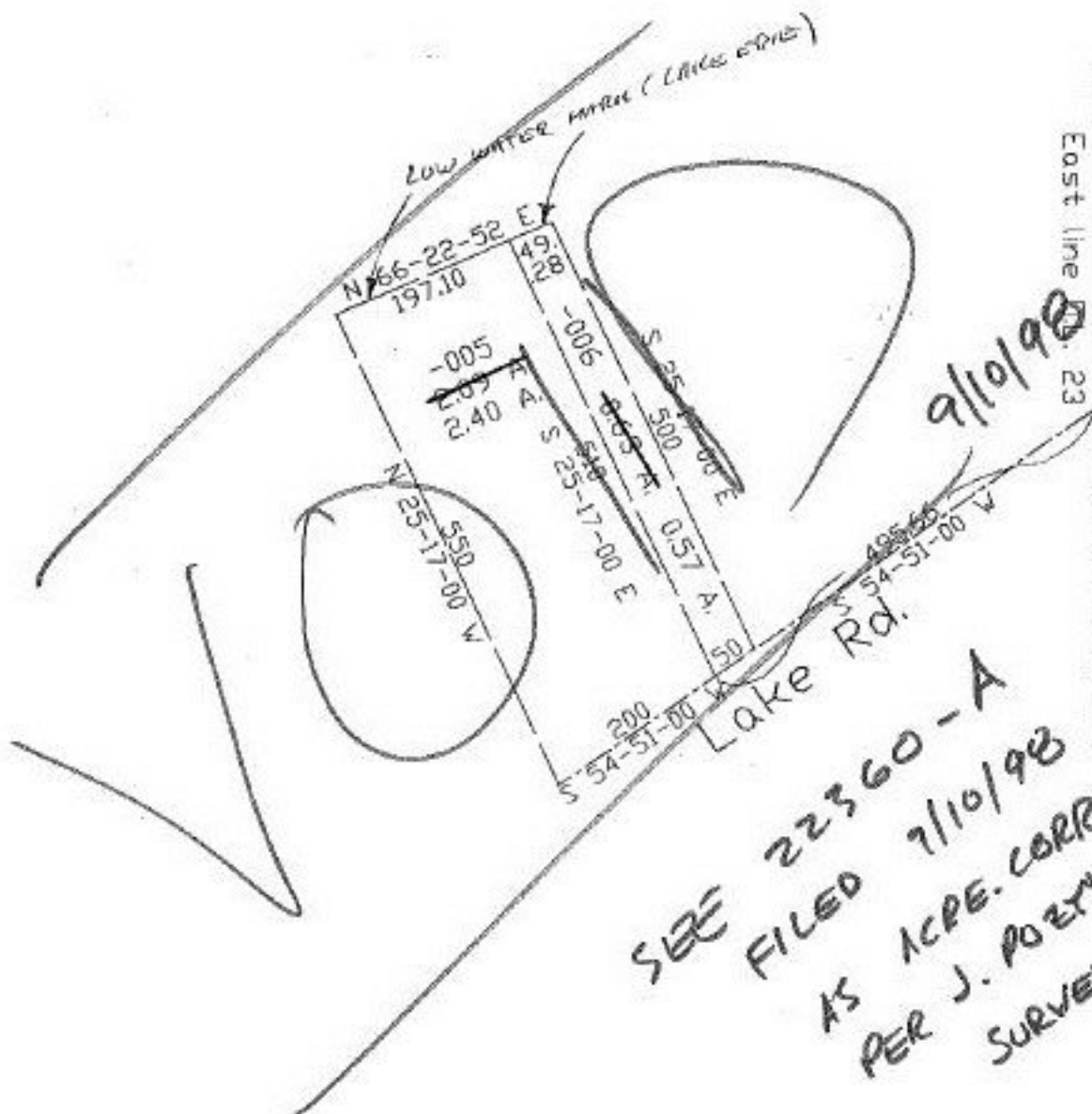
NO. 22343-A



CORR. PER SURVEY
JOHN POZYWAK

-005 ~~2.09~~ A. 2.40 A.

-006 ~~0.63~~ A. 0.57 A.



SPLITS/DEEDS PROCESSED
LORAIN COUNTY TAX MAP DEPARTMENT
226 MIDDLE AVE. ELYRIA, OHIO

SURVEYED BY: John Pozywak
CLOSURE: 0.17:10,000
MAP PAGE(S): 02-02-023-A DATE: 11/7/97
APPROVED BY: koc SCALE: 1" = 200
PRIOR INSTRUMENT: DV 1155/276 OR 1548/896