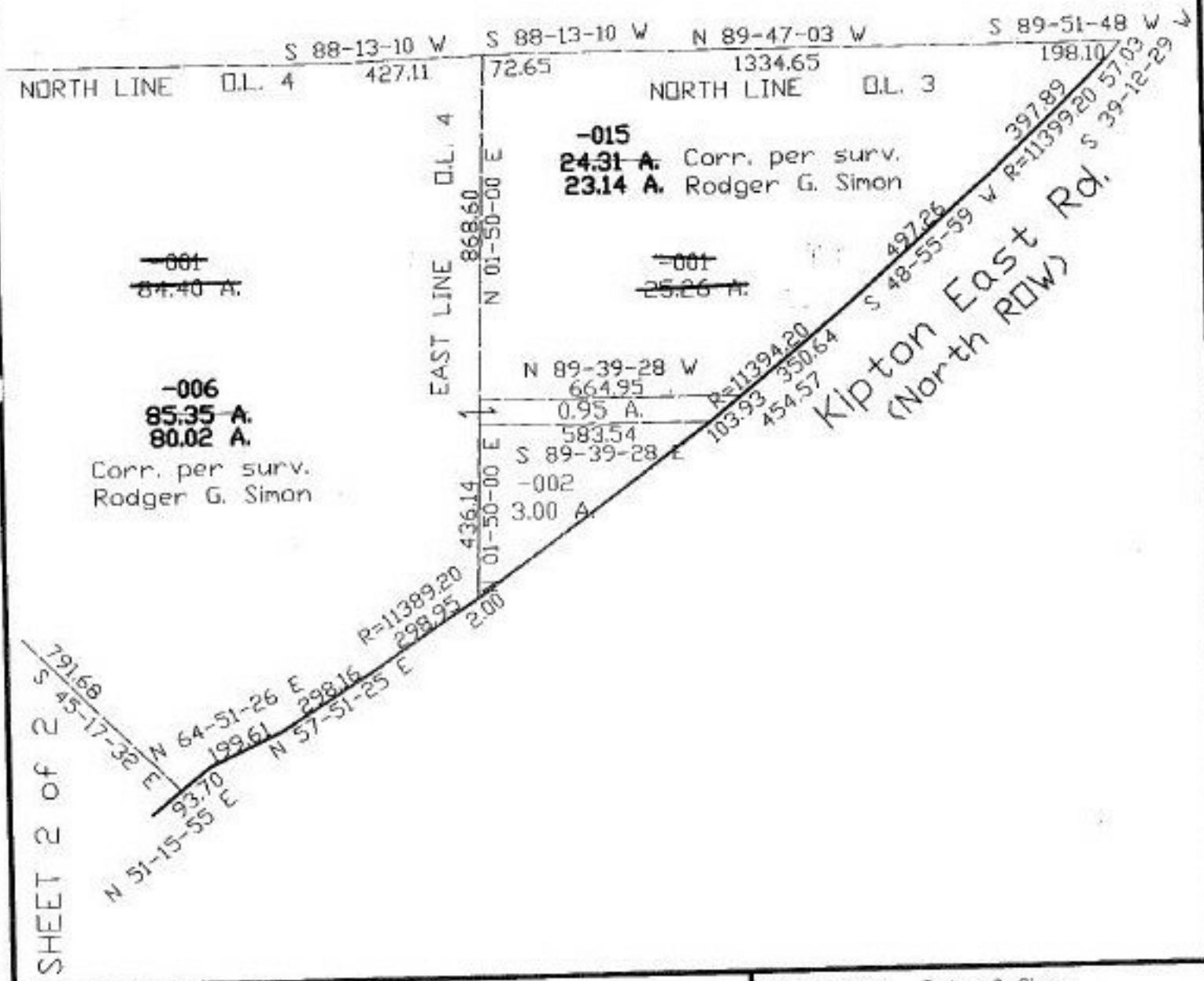
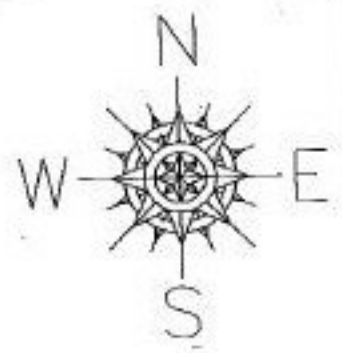
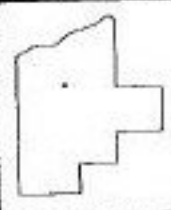


#22322
NO. 22322

PARENT PARCEL: 14-00-003-000-001, 14-00-004-000-001
CHILD PARCEL: 14-00-003-000-015, 14-00-004-000-006
STARTING POINT: n. line of Pittsfield Township & nw line of Kipton East Rd.



SHEET 2 OF 2



SPLITS/DEEDS PROCESSED
LORAIN COUNTY TAX MAP DEPARTMENT
226 MIDDLE AVE. ELYRIA, OHIO

SURVEYED BY: Rodger G. Simon
CLOSURE: 0.05:10,000
MAP PAGE(S): 14-C
APPROVED BY: koc DATE: 10/20/97
SCALE: 1" = 400' PRIOR INSTRUMENT: OR 302/331