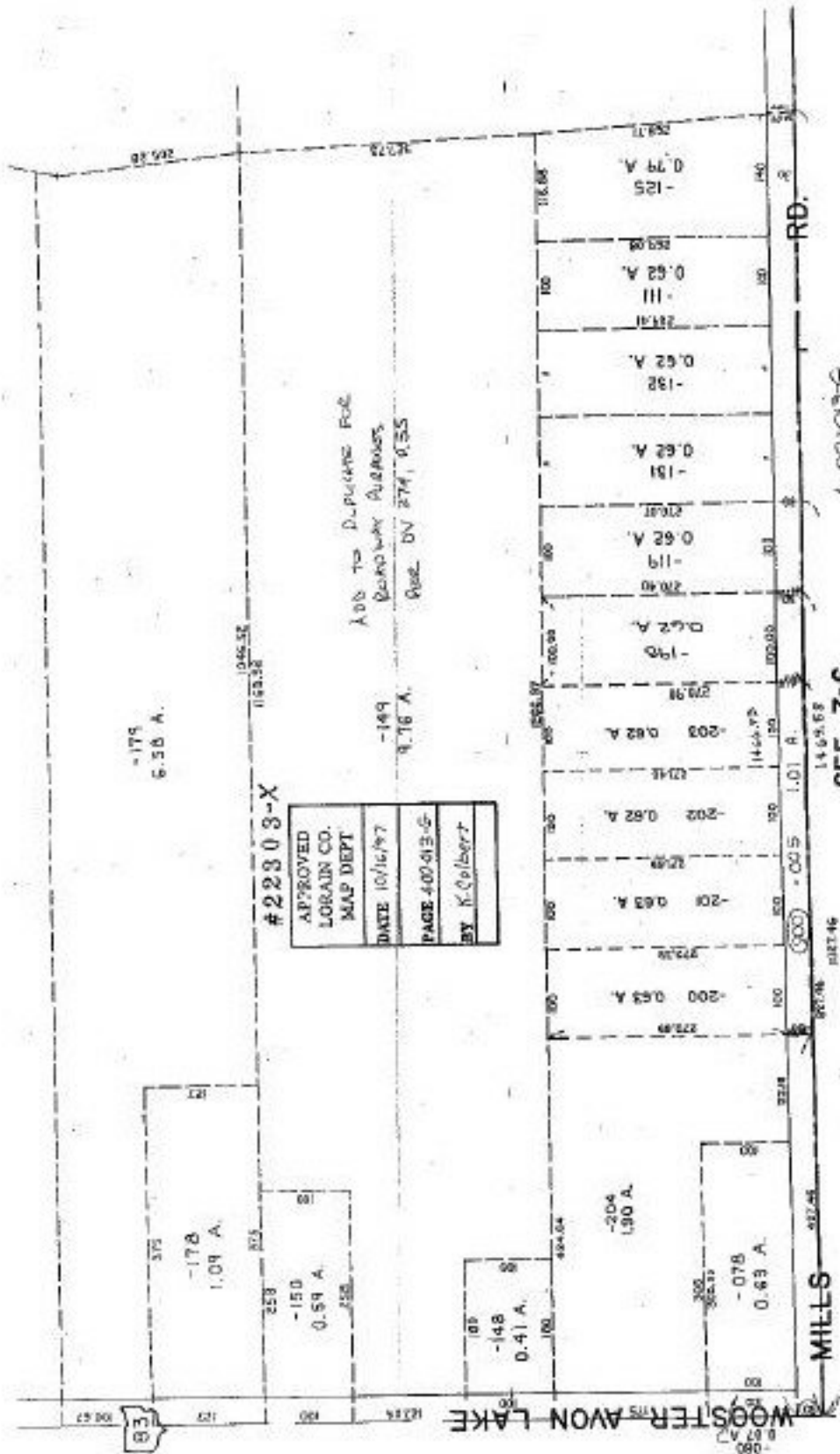


#22303

X



#22303-X

APPROVED
LORAIN CO.
MAP DEPT

DATE 10/16/97

PAGE 400-013-G

BY K. Colbert

ADD TO D. PUTNAM FOR
DRIVEWAY ALTERNATES
PASE DV 274, 0.55

-179
6.58 A.

-178
1.04 A.

-150
0.59 A.

-148
0.41 A.

-204
1.90 A.

-078
0.63 A.

-125
0.79 A.

-111
0.62 A.

-132
0.62 A.

-151
0.62 A.

-119
0.62 A.

-190
0.62 A.

-203
0.62 A.

-201
0.63 A.

-200
0.63 A.

-202
0.62 A.

-201
0.63 A.

-200
0.63 A.

-201
0.63 A.

-202
0.62 A.

SEE 7-C

A-00-013-G

AVON CITY

SCALE: 1" = 100'

W 1/2 SE 1/4 SEC. 13

MILLS

RD.

WOOSTER AVON LAKE