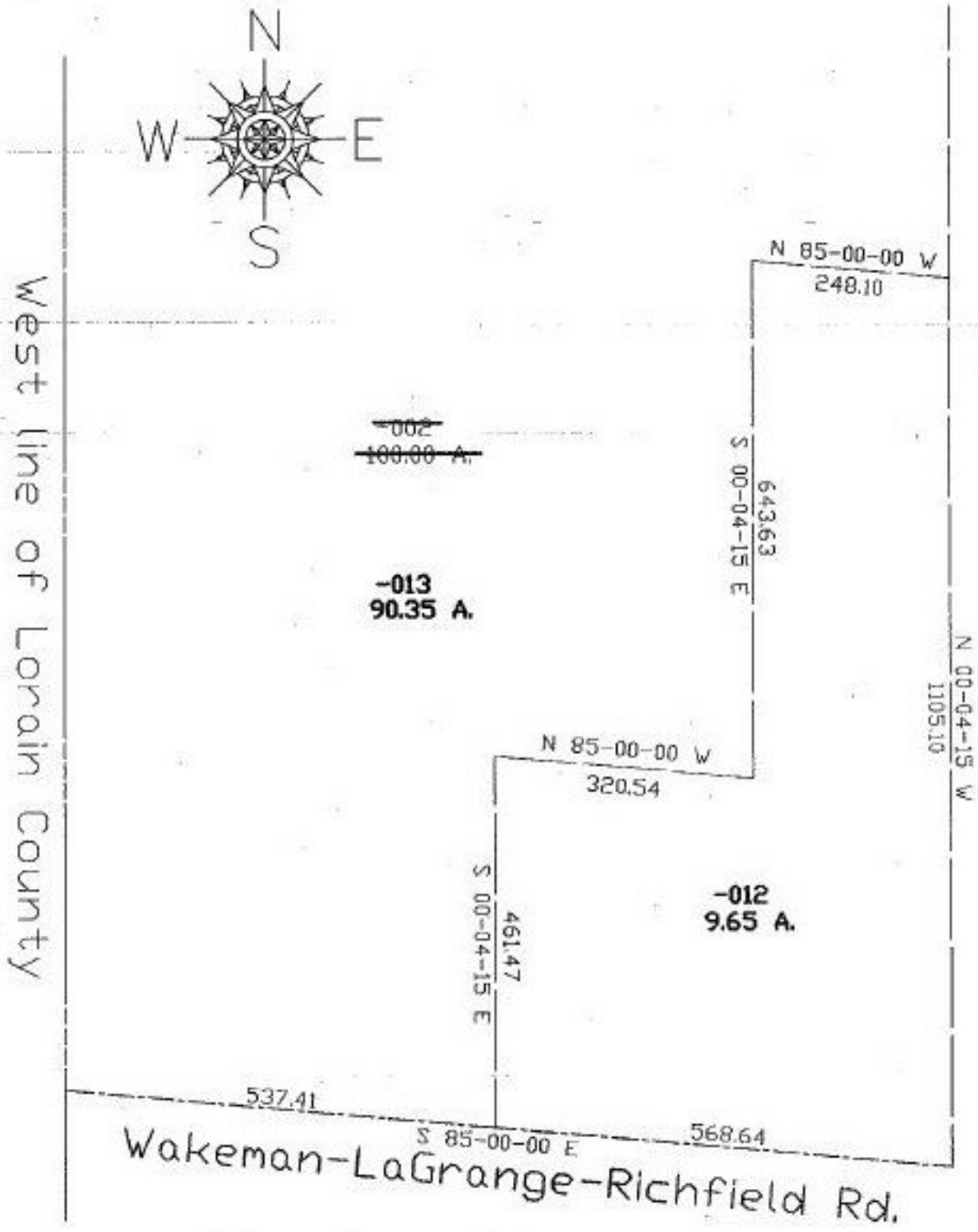


#22301
NO. 22301

PARENT PARCEL: 13-20-021-000-002

CHILD PARCEL: 13-20-021-000-012, 013

STARTING POINT: cl. of Wakeman-LaGrange-Richfield Rd. & west line of Lorain County



SPLITS/DEEDS PROCESSED
LORAIN COUNTY TAX MAP DEPARTMENT
226 MIDDLE AVE. ELYRIA, OHIO

SURVEYED BY: Rodger G. Simon
CLOSURE: 0.00:10.000
MAP PAGE(S): **13-A**
APPROVED BY: kac DATE: 10/10/97
SCALE: 1" = 200' PRIOR INSTRUMENT: OR 1423/802