

#22297-U

PARENT PARCEL: 11-00-006-000-011

CHILD PARCEL:

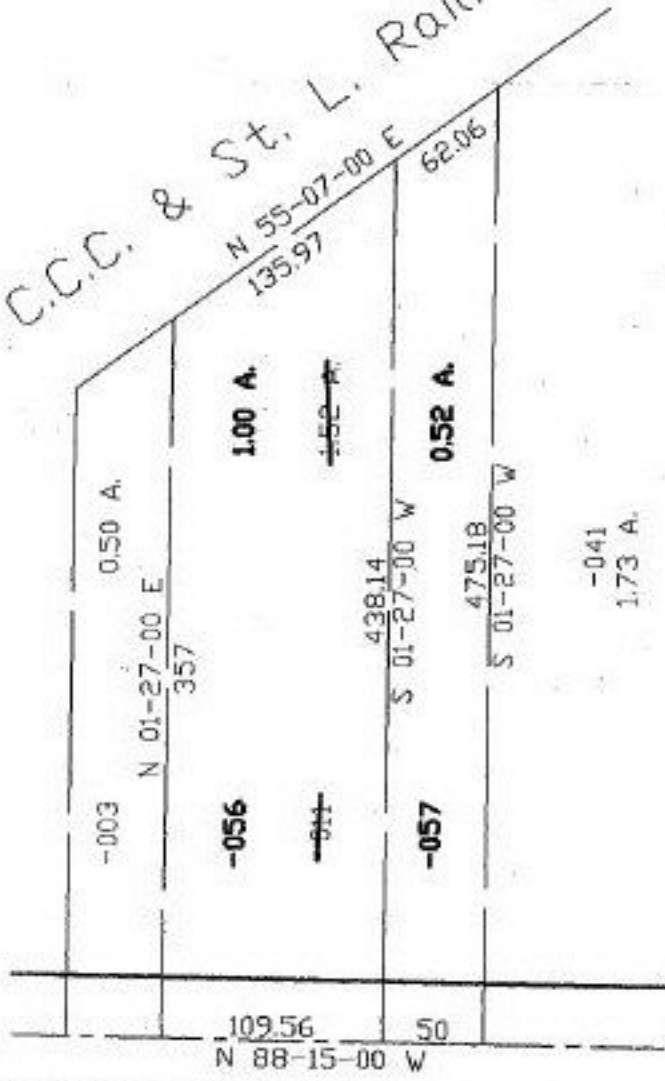
STARTING POINT:

NO. 22297-U



UNCOMB.

C.C.C. & St. L. Railroad



Elyria-Twinsburg Rd.



SPLITS/DEEDS PROCESSED  
 LORAIN COUNTY TAX MAP DEPARTMENT  
 226 MIDDLE AVE. ELYRIA, OHIO

SURVEYED BY: C.I. Biggs  
 CLOSURE: 0.23:10,000  
 MAP PAGE(S): 11-00-006-A  
 APPROVED BY: kac DATE: 10/7/97  
 SCALE: 1" = 100' PRIOR INSTRUMENT: