

# VOID

## WILDFLOWER CONDOMINIUM

PHASE I	V. 57	PGS. 77-82
PHASE II	V. 58	PGS. 62-71
PHASE III	V. 59	PGS. 14-17
PHASE IV	V. 59	PGS. 39-50

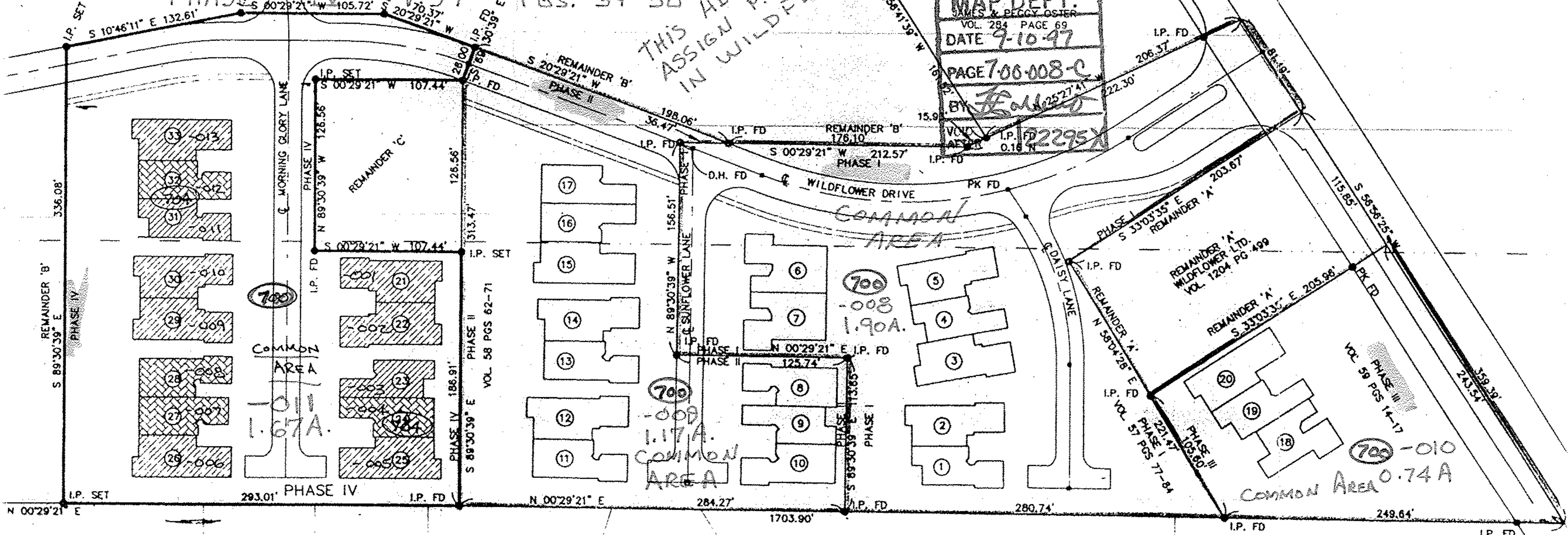
REMAINDER 'B'  
WILDFLOWER LTD.  
1204 PG 499

NORMAN F. ELDER  
VOL. 825 PAGE 112

IS FOR TAKE TO  
THE COMMON AREAS  
CONDOMINIUMS.

APPROVED  
LORAIN CO.  
MAP DEPT.  
JAMES & PEGGY OSTER  
VOL. 284 PAGE 69  
DATE 9-10-97  
PAGE 700-008-C  
BY *[Signature]*

THIS ADD TO DUP.  
ASSIGN P.P. NOSTER  
IN WILDFLOWER



I.P. FD  
0.30 S