

PARENT PARCEL: 12-00-083-000-043

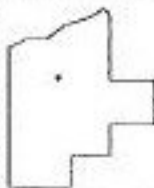
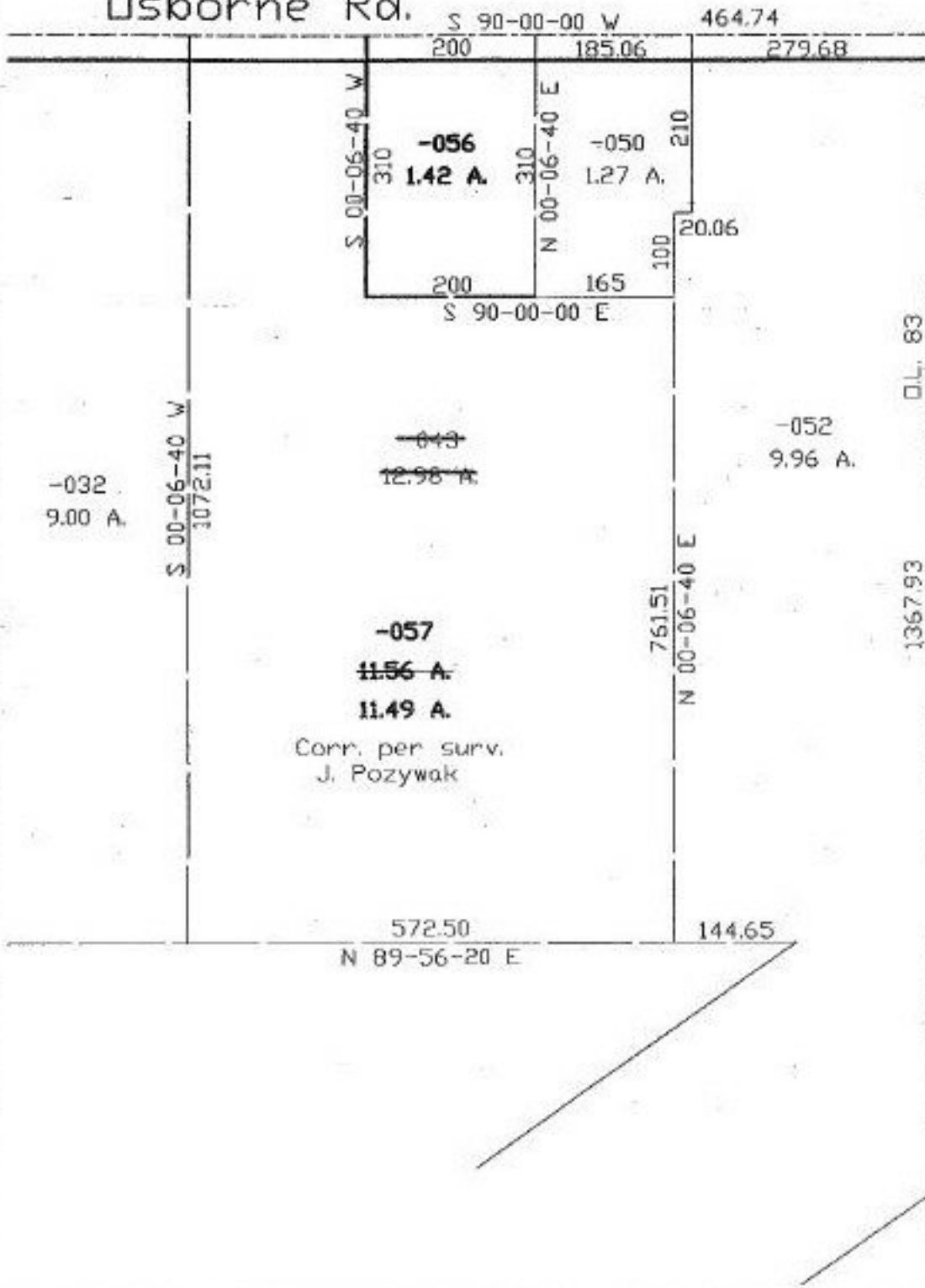
CHILD PARCEL: 12-00-083-000-056, 057

STARTING POINT: E. line of O.L. 83 & cl. of Osborne Rd.

NO. 22289



Osborne Rd.



SPLITS/DEEDS PROCESSED
 LORAIN COUNTY TAX MAP DEPARTMENT
 226 MIDDLE AVE. ELYRIA, OHIO

SURVEYED BY: John Pozywak
 CLOSURE: 0.00:10.000
 MAP PAGE(S): 12-A
 APPROVED BY: kac DATE: 10/2/97
 SCALE: 1" = 200' PRIOR INSTRUMENT: DV 1308/804