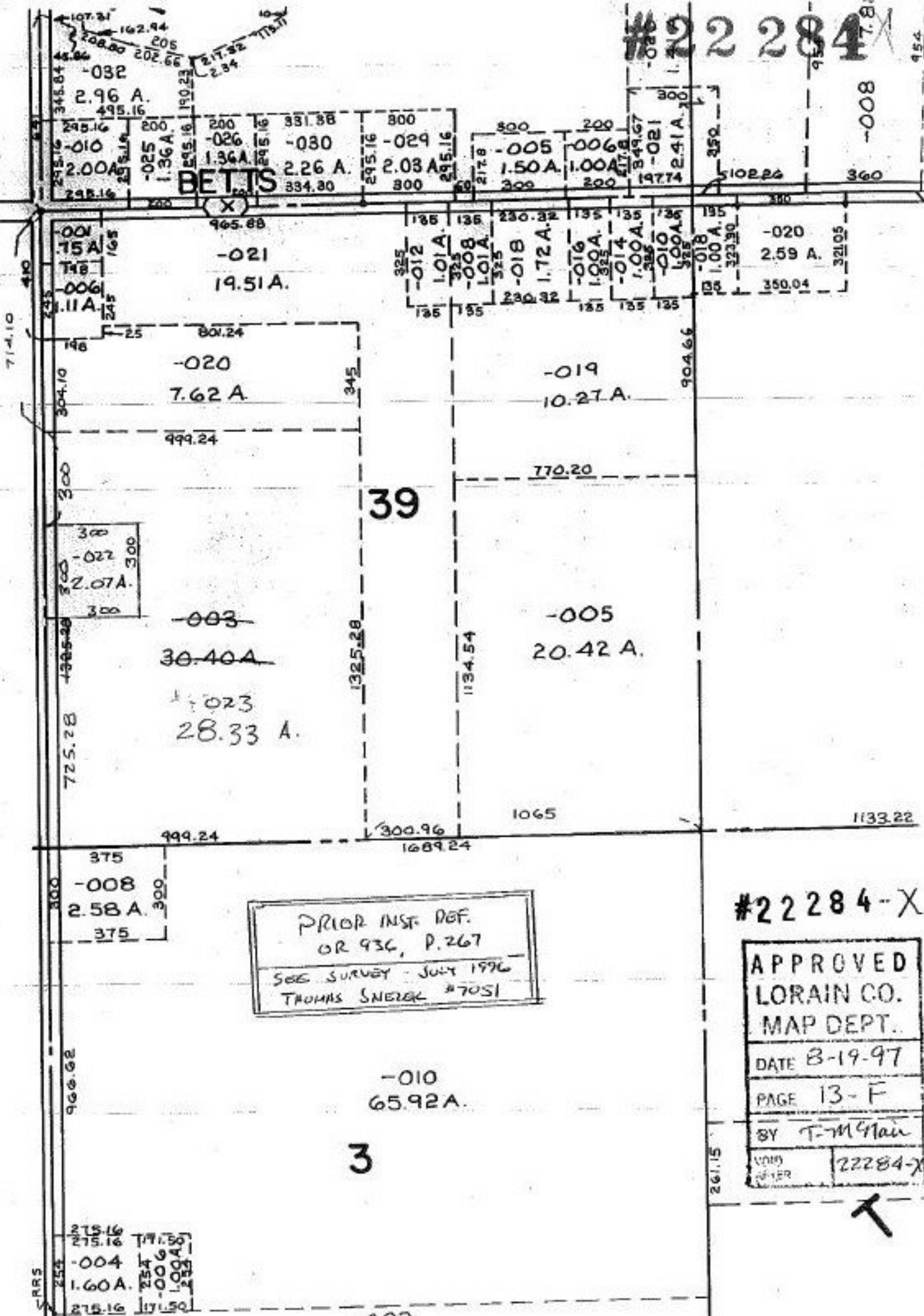


#22284

800



71-1.10

410

198

304.10

300

300

300

300

725.28

1325.28

1134.54

904.66

300.96

1689.24

1133.22

345.84

245.16

245.16

245.16

245.16

245.16

245.16

245.16

245.16

245.16

245.16

245.16

245.16

245.16

245.16

245.16

245.16

245.16

245.16

107.31

162.44

208.80

202.66

205

217.32

2.84

190.23

200

200

200

200

200

200

200

200

200

200

200

331.38

800

500

200

200

200

200

200

200

200

200

200

200

200

200

200

200

200

200

295.16

295.16

295.16

295.16

295.16

295.16

295.16

295.16

295.16

295.16

295.16

295.16

295.16

295.16

295.16

295.16

295.16

295.16

295.16

217.8

1.50 A.

1.00 A.

1.00 A.

1.00 A.

1.00 A.

1.00 A.

1.00 A.

1.00 A.

1.00 A.

1.00 A.

1.00 A.

1.00 A.

1.00 A.

1.00 A.

1.00 A.

1.00 A.

1.00 A.

1.00 A.

349.67

349.67

349.67

349.67

349.67

349.67

349.67

349.67

349.67

349.67

349.67

349.67

349.67

349.67

349.67

349.67

349.67

349.67

349.67

197.74

197.74

197.74

197.74

197.74

197.74

197.74

197.74

197.74

197.74

197.74

197.74

197.74

197.74

197.74

197.74

197.74

197.74

197.74

5102.24

5102.24

5102.24

5102.24

5102.24

5102.24

5102.24

5102.24

5102.24

5102.24

5102.24

5102.24

5102.24

5102.24

5102.24

5102.24

5102.24

5102.24

5102.24

360

360

360

360

360

360

360

360

360

360

360

360

360

360

360

360

360

360

360

350

350

350

350

350

350

350

350

350

350

350

350

350

350

350

350

350

350

350

321.05

321.05

321.05

321.05

321.05

321.05

321.05

321.05

321.05

321.05

321.05

321.05

321.05

321.05

321.05

321.05

321.05

321.05

321.05

1065

1065

1065

1065

1065

1065

1065

1065

1065

1065

1065

1065

1065

1065

1065

1065

1065

1065

1065

1133.22

1133.22

1133.22

1133.22

1133.22

1133.22

1133.22

1133.22

1133.22

1133.22

1133.22

1133.22

1133.22

1133.22

1133.22

1133.22

1133.22

1133.22

1133.22

261.15

261.15

261.15

261.15

261.15

261.15

261.15

261.15

261.15

261.15

261.15

261.15

261.15

261.15

261.15

261.15

261.15

261.15

261.15

954

954

954

954

954

954

954

954

954

954

954

954

954

954

954

954

954

954

954

PRIOR INST. REF.
OR 936, P. 267
SEE SURVEY - JULY 1976
THOMAS SNERG #7051

#22284-X

APPROVED
LORAIN CO.
MAP DEPT.
DATE 8-19-97
PAGE 13-F
BY T-M Ghan
VOID
#22284-X

