

#22284
NO. 22284-X

PARENT PARCEL: 13-08-003-000-010
CHILD PARCEL: 13-08-003-000-011 & -012
STARTING POINT: cl. of Baird Rd. & cl. of Betts Rd.

BETTS ROAD

P.O.B.
IP FD

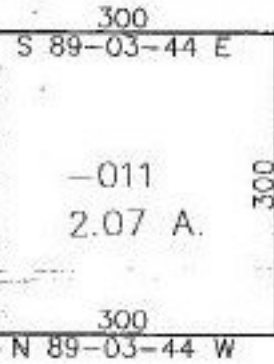


BAIRD ROAD 60'

714.10
S 00-18-43 W

300
S 00-18-43 W

300
N 00-18-43 E



SEE
#22284-X
FOR CREATION
OF NEW P.P.N.O.'s.

THIS NO. UNDID PARCEL
IN WRONG LOCATION
ON MAPS & SHOWS
CORRECT LOCATION
-010 & P.P.N.O.
65.92-A. FOR
THIS SPLIT

-012
63.85 A.

SEE

ORV 1360/556

SPLITS/DEEDS PROCESSED

LORAIN COUNTY TAX MAP DEPARTMENT
226 MIDDLE AVE. ELYRIA, OHIO

SURVEYED BY: Thomas M. Szezak

CLOSURE: 0.00 : 10.000

MAP PAGE(S): 13-F

APPROVED BY: koc/rfb DATE: 4-4-97

SCALE: 1" = 200'