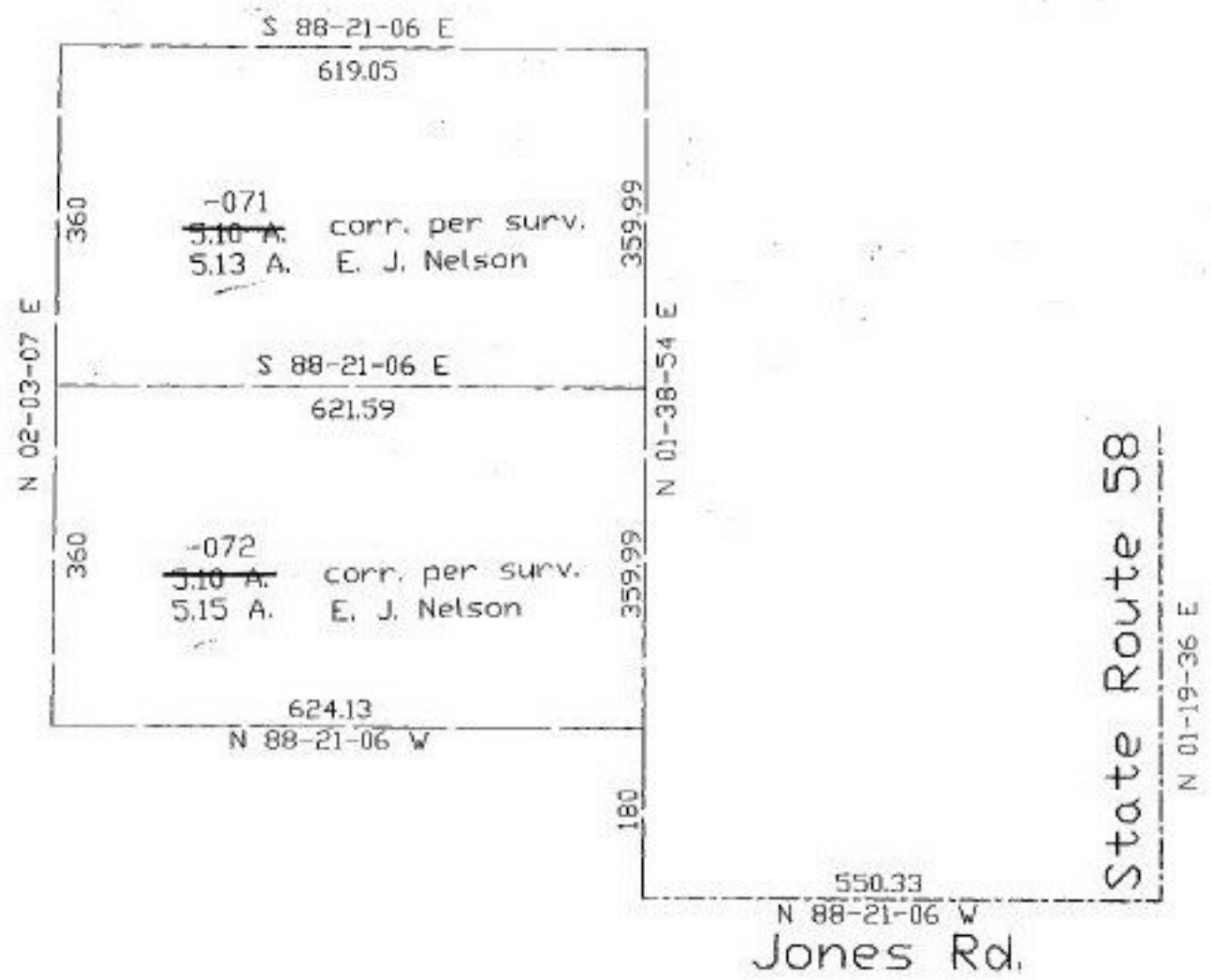


#22280-A
NO. 22280-A

PARENT PARCEL: 18-00-026-101-071, 072
CHILD PARCEL:
STARTING POINT: ct. of Jones Rd. & ct. of SR 58



SPLITS/DEEDS PROCESSED
LORAIN COUNTY TAX MAP DEPARTMENT
226 MIDDLE AVE. ELYRIA, OHIO

SURVEYED BY: Eric J. Nelson
CLOSURE: 0.01:10,000
MAP PAGE(S): 18-00-026-0
APPROVED BY: kac DATE: 11/12/97
SCALE: 1" = 200' PRIOR INSTRUMENT: