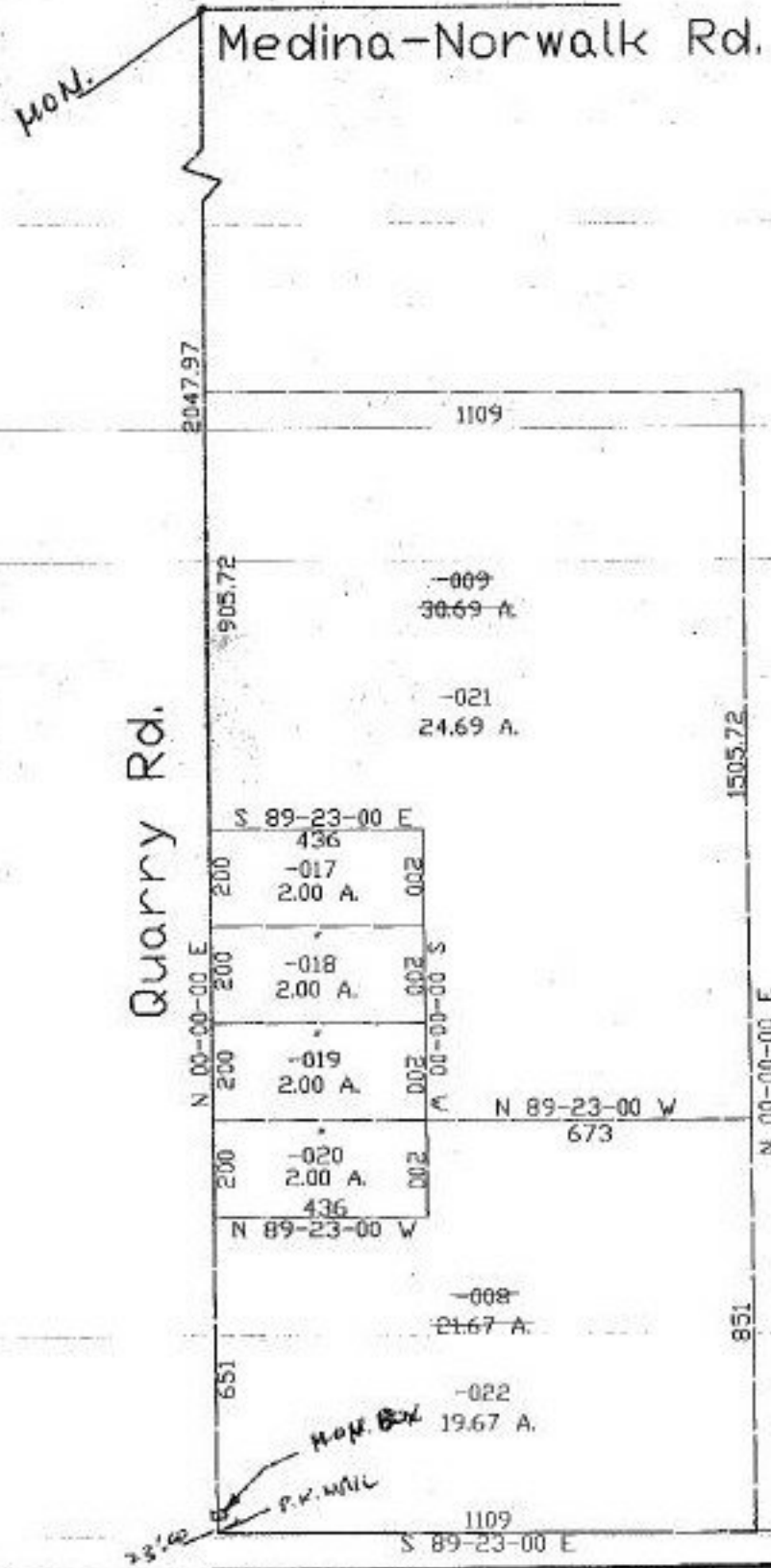


PARENT PARCEL: 18-00-046-000-008, 009
 CHILD PARCEL: 18-00-046-000-017 thru -022
 STARTING POINT: c.l. of Quarry Rd. & c.l. of Medina-Norwalk Rd.

#22279
 NO. 22279



SPLITS/DEEDS PROCESSED
 LORAIN COUNTY TAX MAP DEPARTMENT
 226 MIDDLE AVE. ELYRIA, OHIO

SURVEYED BY: Thomas M. Sniezek
 CLOSURE: 0.00:10.000
 MAP PAGE(S): **1B-E**
 APPROVED BY: kac DATE: 9/22/97
 SCALE: 1" = 400' PRIOR INSTRUMENT: 802/424 35/746