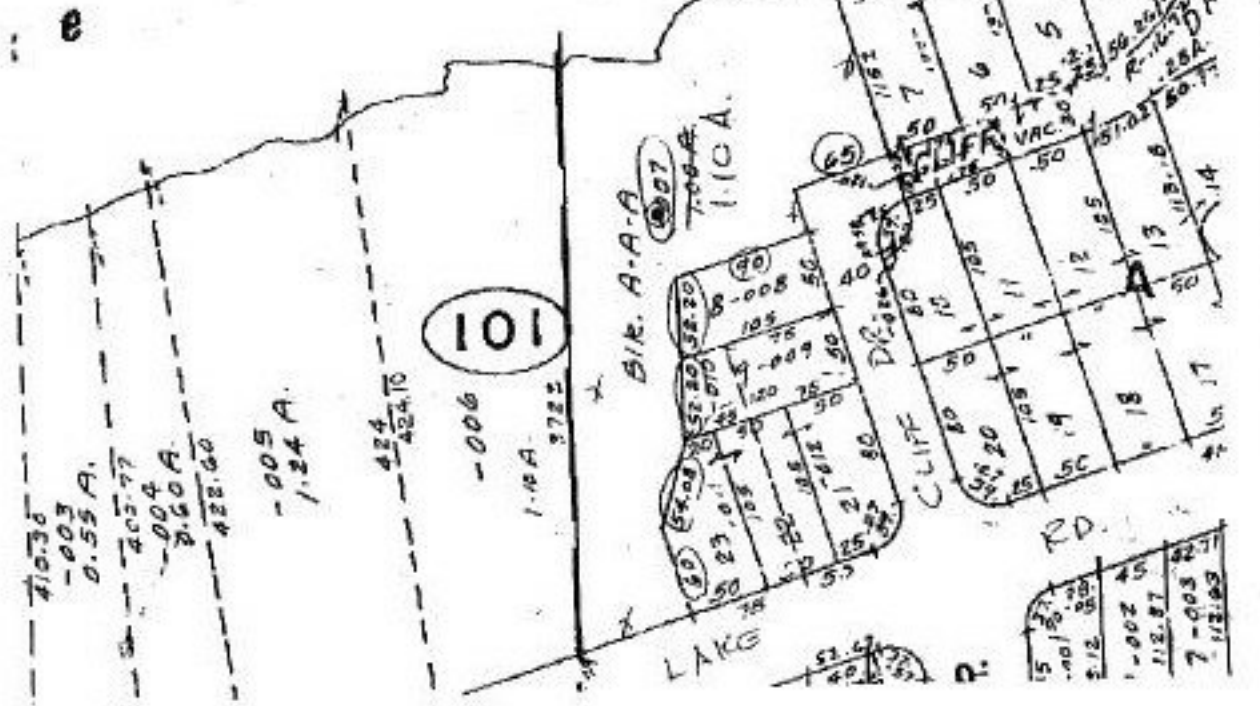


E #22 278



ACRE. CORR PER  
 OR 1113/570 & DV 302/580  
 PV. 10, P. 30 BLK "AAA"

|  |  |
|--|--|
| <p>LORAIN COUNTY<br/>         GIS<br/>         MARK R. STEWART<br/>         COUNTY AUDITOR</p> | <p>LORAIN COUNTY AUDITOR'S OFFICE<br/>         MARK R. STEWART<br/>         LORAIN COUNTY AUDITOR</p> <p>LORAIN COUNTY ENGINEER'S OFFICE<br/>         KENNETH P. CARNEY SR.<br/>         LORAIN COUNTY ENGINEER</p> <p><small>NOTE: TAX MAP NOT DRAWN TO SCALE</small></p> |
|--|--|

#22278-A

|                                     |
|-------------------------------------|
| APPROVED<br>LORAIN CO.<br>MAP DEPT. |
| DATE 9-30-97                        |
| BY 3-00-035                         |
| K. Carney                           |
| 22278-A                             |