

#22277

NO. 22277

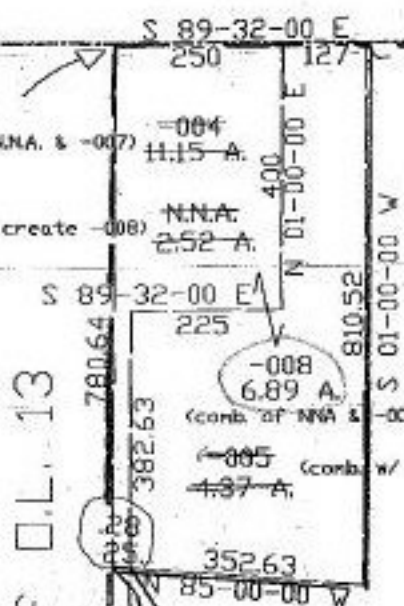
PARENT PARCEL: 18-00-013-000-003, -004  
CHILD PARCEL: 18-00-013-000-008, 009  
STARTING POINT: NE corner of O.L. 13



Jones Rd.

P.K. WAIL  
NE corner of O.L. 13  
(split into N.N.A. & -007)

(Comb. w/ -005 to create -008)  
N.N.A.  
252 A.



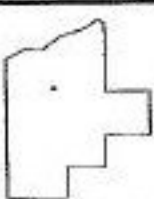
W. Line of O.L. 13

-003 (split into -005 & -006)  
236.05 A.  
~~-006~~ (comb. w/ -007 to create -009)  
231.66 A.

-009 (comb. of -006 & -007)  
240.30 A.

-004 (split into N.N.A. & -007)  
11.15 A.

-007  
8.63 A. corr. per surv.  
8.64 A. Carl R. Anderson  
(comb. w/ -006 to create -009)



**SPLITS/DEEDS PROCESSED**  
LORAIN COUNTY TAX MAP DEPARTMENT  
226 MIDDLE AVE. ELYRIA, OHIO

SURVEYED BY: Carl R. Anderson  
CLOSURE: 0.93:10,000  
MAP PAGE(S): 18-0  
APPROVED BY: kac DATE: 9/19/97  
OR 632-194  
SCALE: 1" = 300' PRIOR INSTRUMENT: DV 1395/703