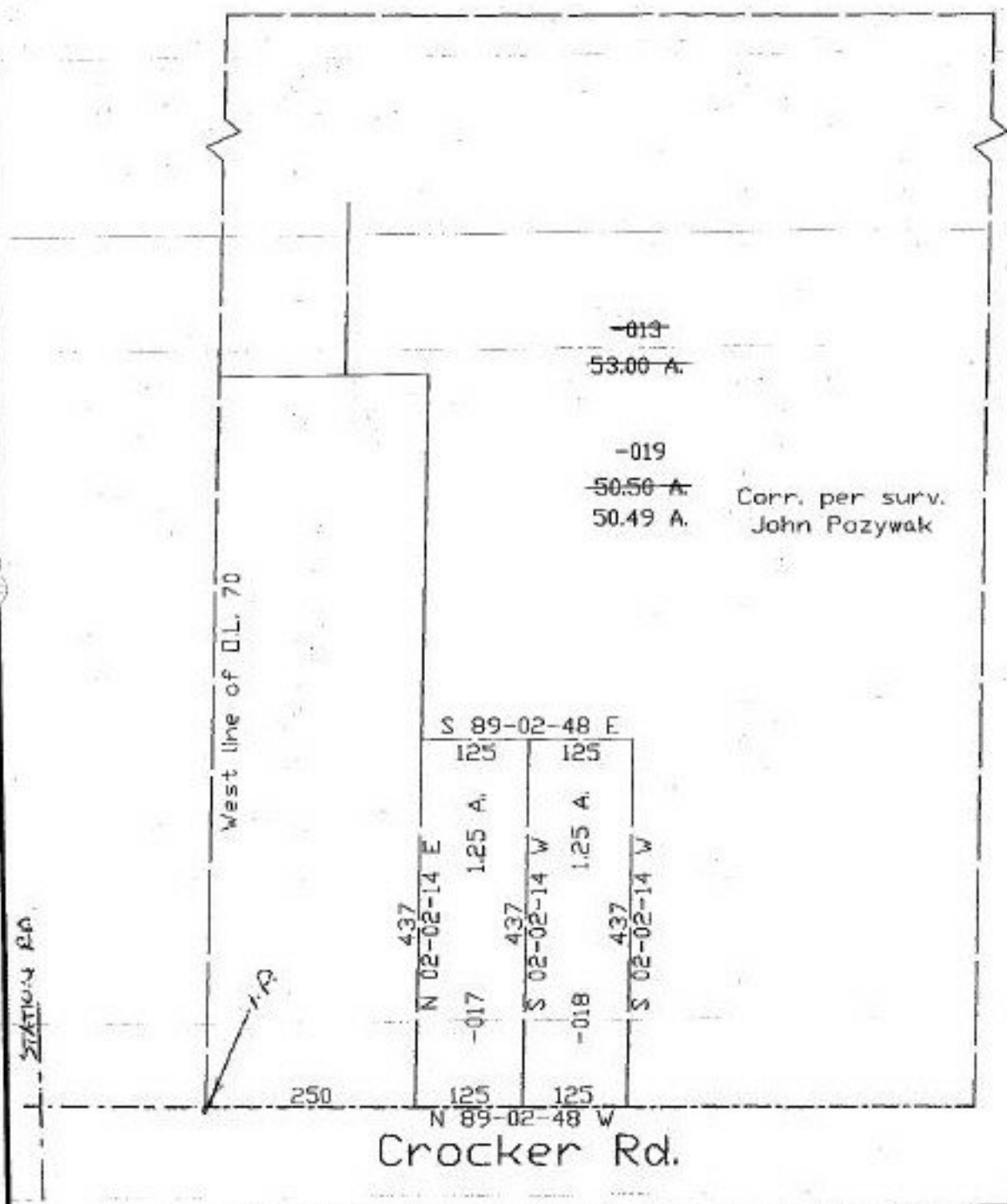
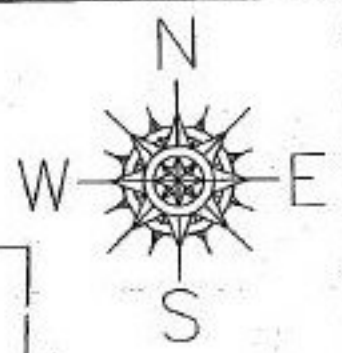


#22276
NO. 22276

PARENT PARCEL: 12-00-070-000-013
CHILD PARCEL: 12-00-070-000-017, 018, 019
STARTING POINT: W. line of O.L. 70 & cl. of Crocker Rd.



SPLITS/DEEDS PROCESSED
LORAIN COUNTY TAX MAP DEPARTMENT
226 MIDDLE AVE. ELYRIA, OHIO

SURVEYED BY: John Poznyak
CLOSURE: 0.00:10.000
MAP PAGE(S): 12-F
APPROVED BY: kac DATE: 9/18/97
SCALE: 1" = 200' PRIOR INSTRUMENT: DV 1409/208