

#22275

NO. 22275

PARENT PARCEL: 16-00-061-000-001

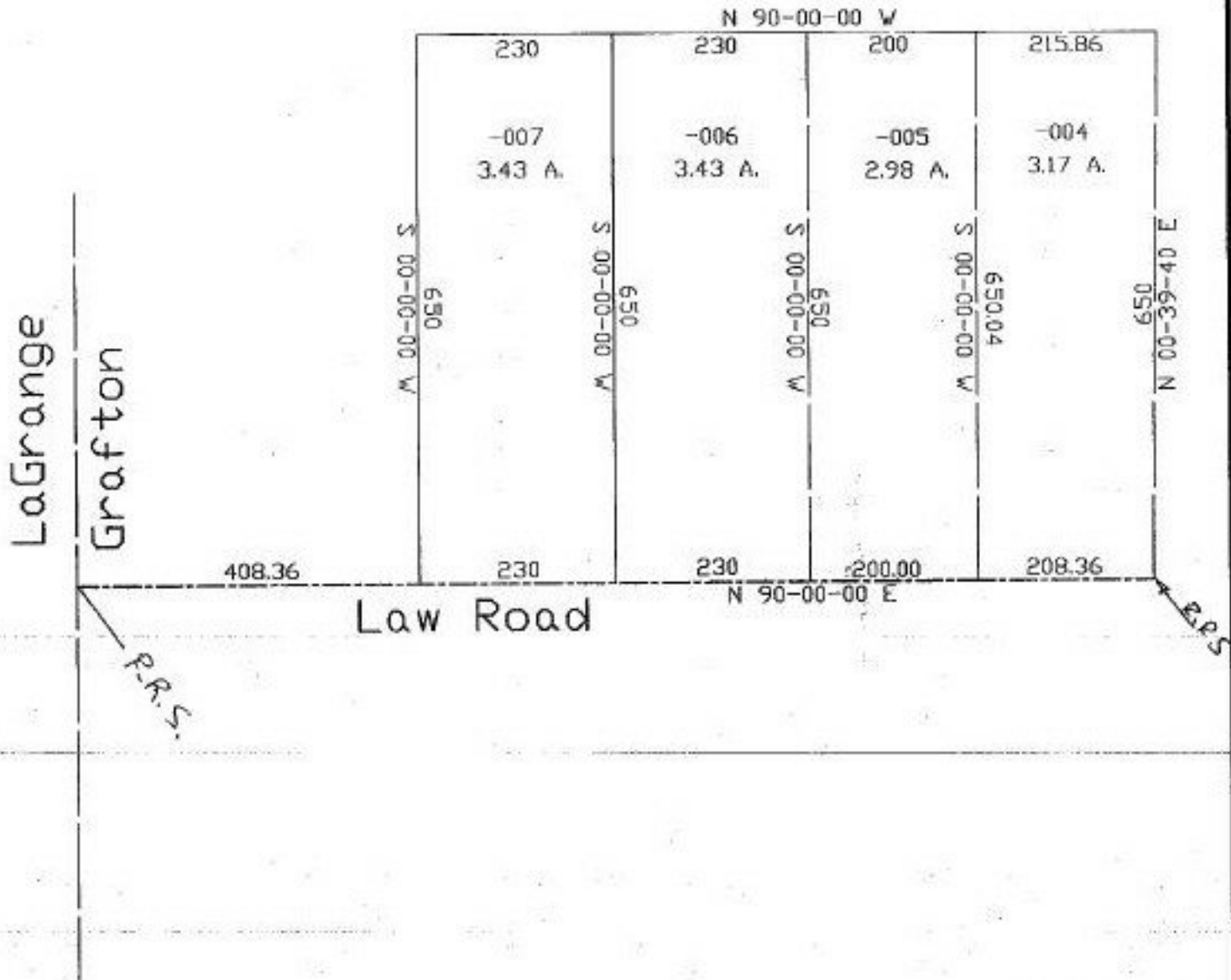
CHILD PARCEL: 16-00-061-000-004 thru 008

STARTING POINT: cL of Law Rd. & w. line of Grafton twp.



~~-001~~
~~77.62 A.~~

~~-008~~
~~64.61 A.~~
corr. per surv.
Rodger G. Simon 64.93 A.



SPLITS/DEEDS PROCESSED
LORAIN COUNTY TAX MAP DEPARTMENT
226 MIDDLE AVE. ELYRIA, OHIO

SURVEYED BY: Rodger G. Simon
CLOSURE: 0.48:10.000
MAP PAGE(S): 18-E
APPROVED BY: kac DATE: 9/10/97
SCALE: 1" = 200' PRIOR INSTRUMENT: # 474534