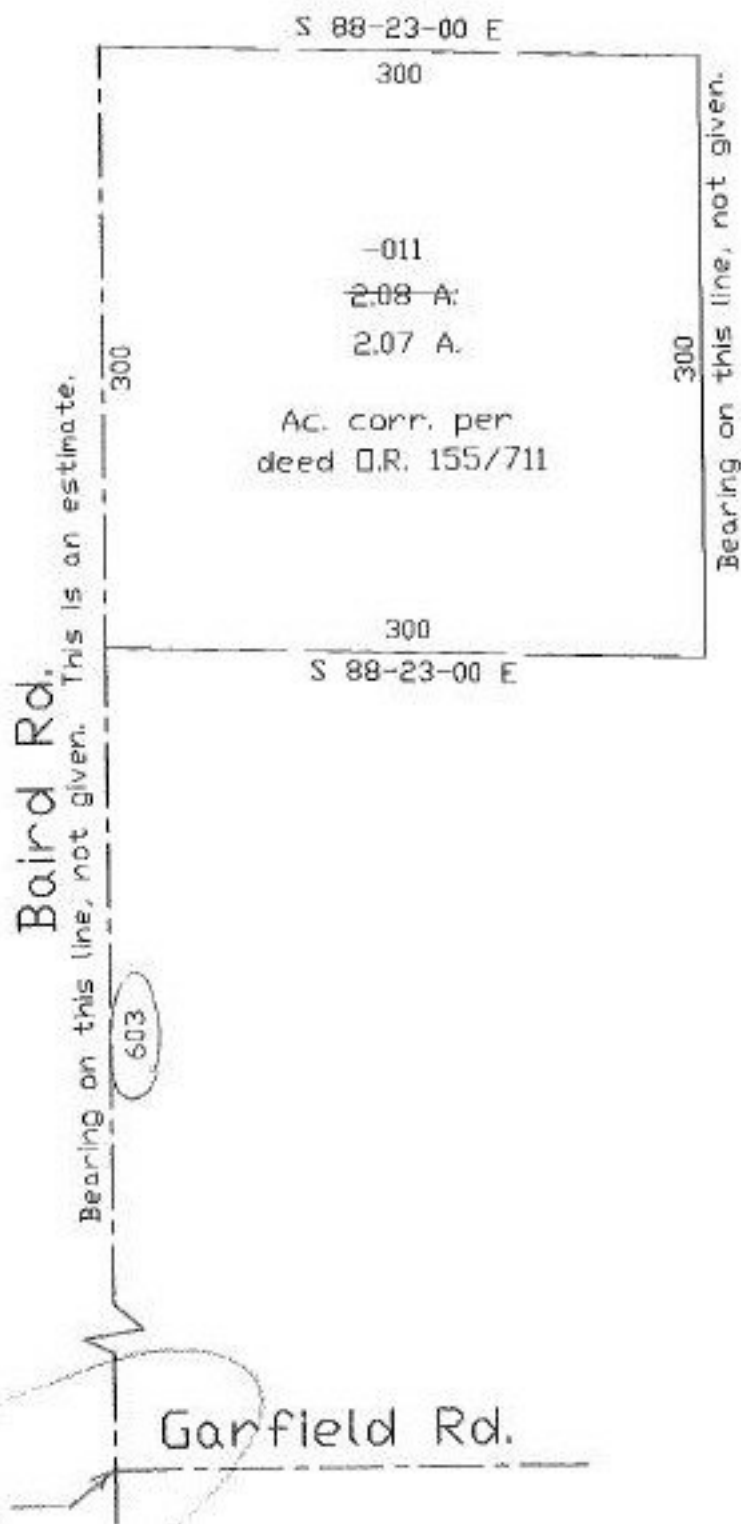


PARENT PARCEL: 08-14-007-000-011

CHILD PARCEL:

STARTING POINT:

NO. 22271-A



Handwritten initials and date: JS 2-17-98



SPLITS/DEEDS PROCESSED
 LORAIN COUNTY TAX MAP DEPARTMENT
 226 MIDDLE AVE. ELYRIA, OHIO

SURVEYED BY: YIGLIS DORNO

CLOSURE: NONE

MAP PAGE(S): 08-B

APPROVED BY: KAC DATE: 8/29/97

SCALE: 1" = 100' PRIOR INSTRUMENT: 08 155/711