

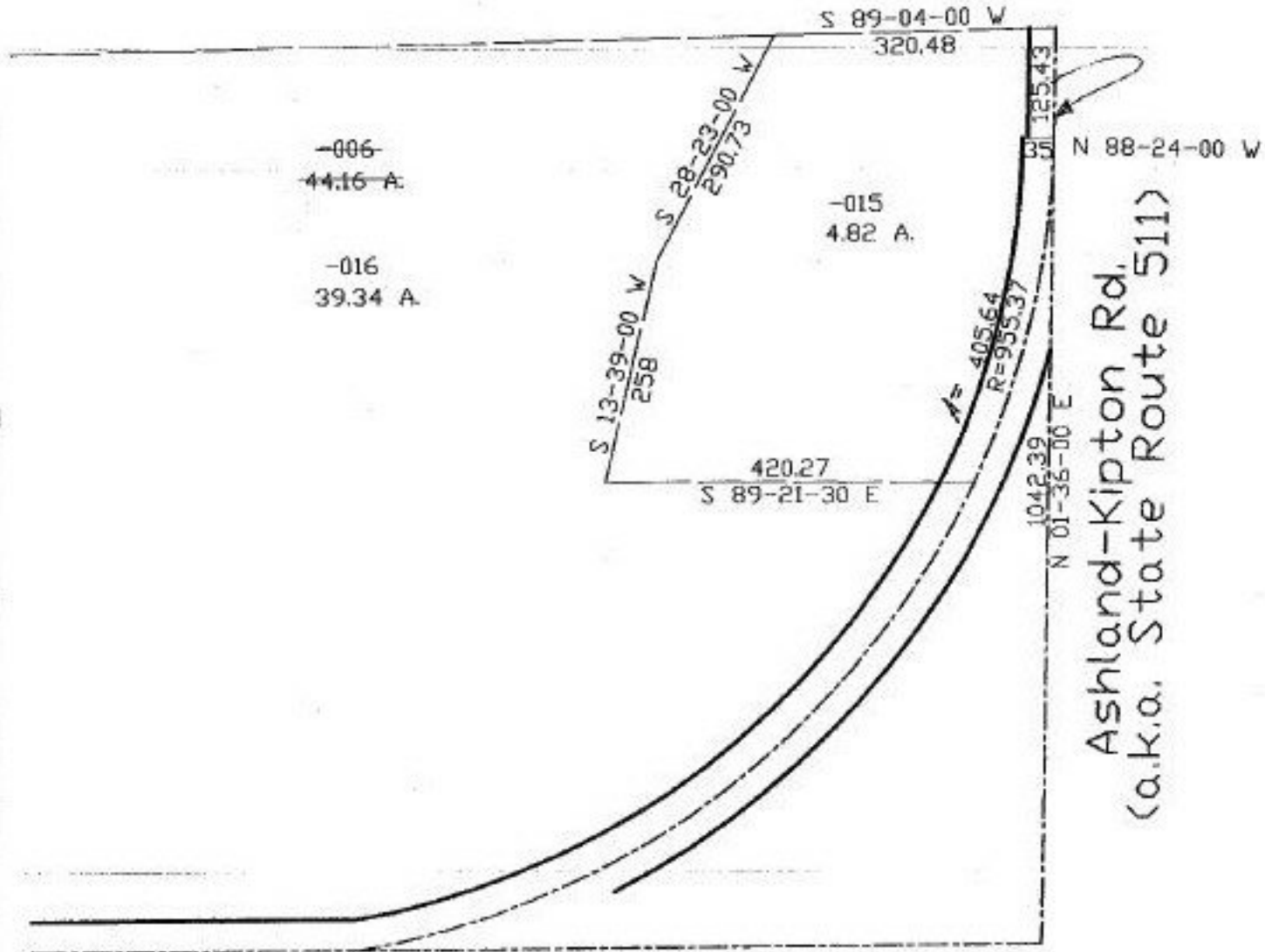
#22269

NO. 22269

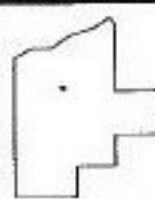
PARENT PARCEL: 13-11-025-000-006

CHILD PARCEL: 13-11-025-000-015, 016

STARTING POINT: SW corner of O.L. 25 & c. of Ashland-Kipton Rd.



Oberlin-Norwalk Rd.



SPLITS/DEEDS PROCESSED
 LORAIN COUNTY TAX MAP DEPARTMENT
 226 MIDDLE AVE. ELYRIA, OHIO

SURVEYED BY: Rodger G. Simon
 CLOSURE: 0.02 per 10,000
 MAP PAGE(S): 13-11-025
 APPROVED BY: koc DATE: 8/21/97
 SCALE: 1" = 200' PRIOR INSTRUMENT: 1243/647