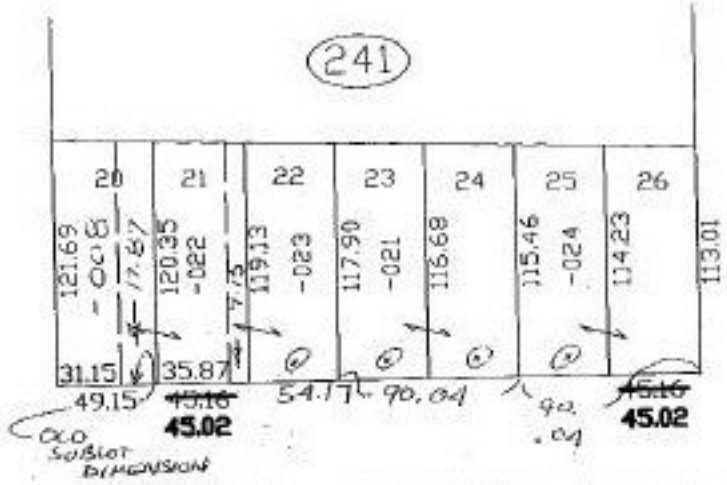


#22267-X  
NO. 22267-X

PARENT PARCEL: 02-01-003-241-021 thru 024  
CHILD PARCEL:  
STARTING POINT:

Tax map disagrees with plat  
Tax map page: 02-01-003-J  
W.E. and Clara E. Foote Addition  
Vol. 7 pg. 57



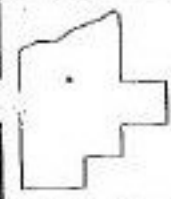
SUBLOTS 21-26  
IN BLK (241)  
HAVE A FRONTAGE OF  
45.02 FT.  
WHICH AFFECTS FRONTAGE  
ON PARCELS LISTED  
Below

PARCEL SIZE CORRECTION ONLY AFFECTS MAP  
NOT DUPLICATE DUE  
TO COMBINATION OF  
SUBLOTS

Correct the following parcels:

- 02-01-003-241-022 54.01 X 120.80
  - 02-01-003-241-023 54.31 X 119.35
  - 02-01-003-241-021 90.04 X 115
  - 02-01-003-241-024 90.32 X 115.46
- Duplicate for 1996

- 53.87 X 120.35
  - 54.17 X 119.35
  - 90.04 X 117.90
  - 90.04 X 115.46
- NEW DIMENSION FOR FRONTAGE



**SPLITS/DEEDS PROCESSED**  
LORAIN COUNTY TAX MAP DEPARTMENT  
226 MIDDLE AVE. ELYRIA, OHIO

SURVEYED BY: Correction from PLAT  
CLOSURE: PV 7, Pg 57  
MAP PAGE(S): 02-01-003-J  
APPROVED BY: KAC DATE: 8/28/97  
SCALE: 1" = 100 PRIOR INSTRUMENT: