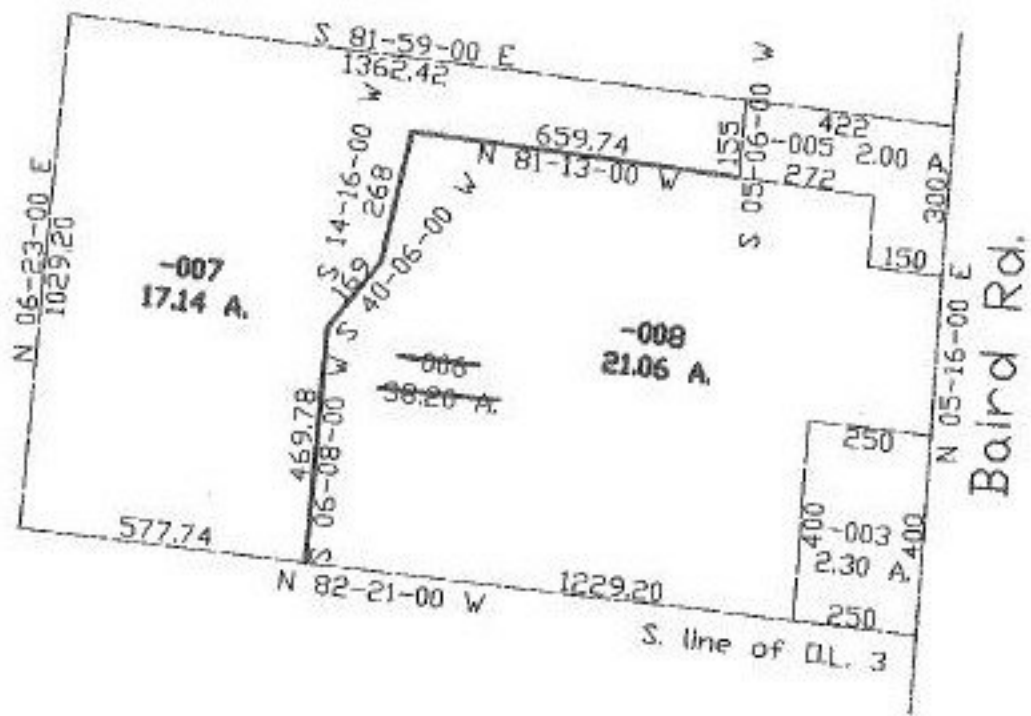
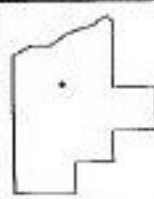


PARENT PARCEL: 08-13-003-000-006
CHILD PARCEL: 08-13-003-000-007, 008
STARTING POINT: cl. of Baird Rd. & s. line of O.L. 3

NO. 22265



VS
2-18-98



SPLITS/DEEDS PROCESSED
LORAIN COUNTY TAX MAP DEPARTMENT
226 MIDDLE AVE. ELYRIA, OHIO

SURVEYED BY: John Poznyak
CLOSURE: 0.45 per 10,000
MAP PAGE(S): 8-E
APPROVED BY: kac DATE: 10/4/97
SCALE: 1" = 400' PRIOR INSTRUMENT: OR 496-279