

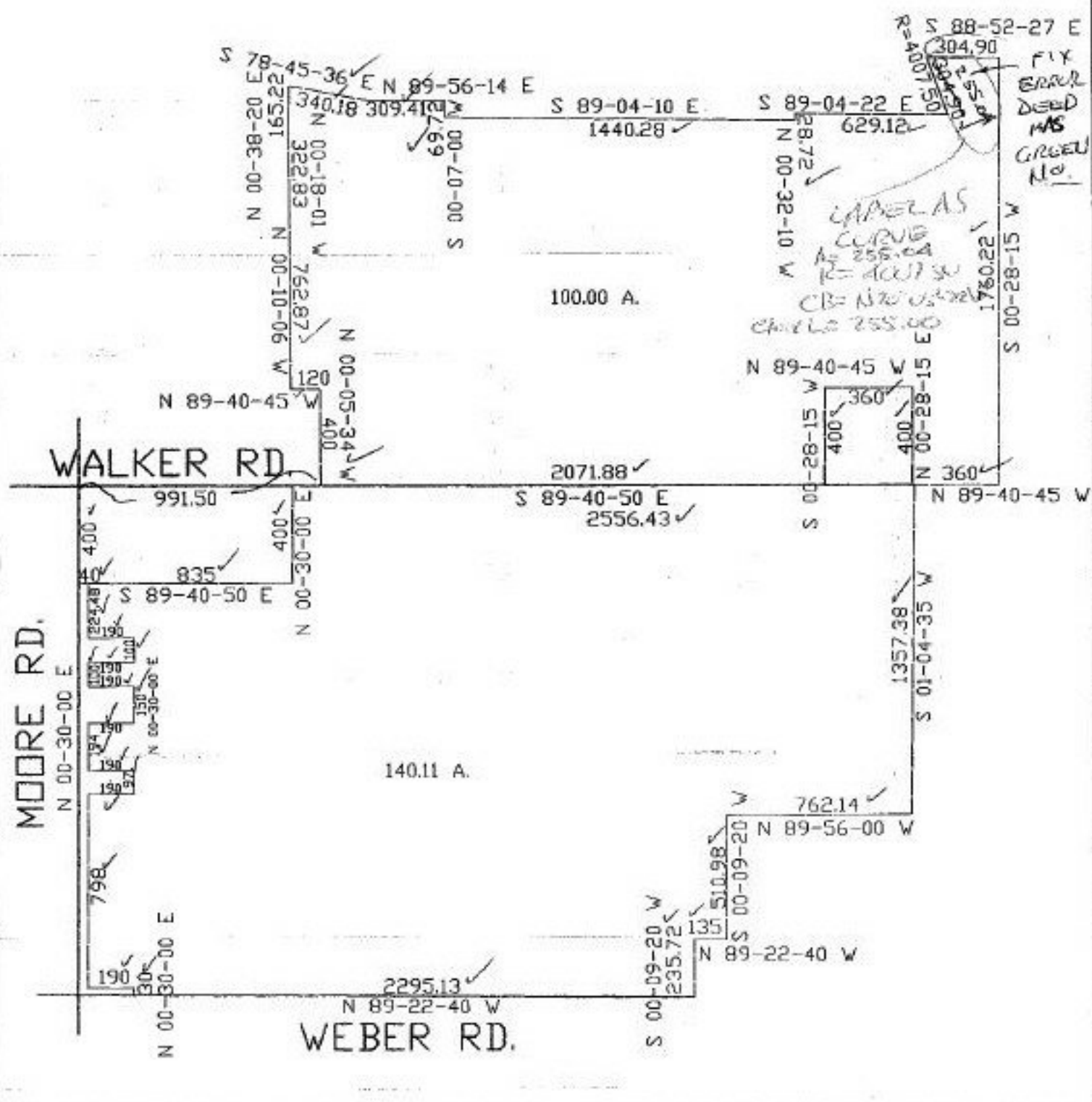
722265

PARENT PARCEL: 04-00-007-150-007,008,009,035 04-00-008-101-005,025,026,038

04-00-008-102-001,003,004,005,007 THRU 011 04-00-008-103-001,002

NO. 22265-D

STARTING POINT: CL OF WALKER RD. & CL OF MOORE RD.



SPLITS/DEEDS PROCESSED
 LORAIN COUNTY TAX MAP DEPARTMENT
 226 MIDDLE AVE. ELYRIA, OHIO

SURVEYED BY: DONALD E. WOLKE
 CLOSURE: 27.55 PER 10,000
 MAP PAGE(S): 04-00-007-E, F 4-B
 04-00-008-A, B
 APPROVED BY: KAC DATE: 8/8/97
 SCALE: 1" = 600'