

PARENT PARCEL: 06-26-052-000-028

CHILD PARCEL: 06-26-052-000-031, 032, 033

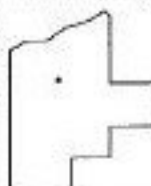
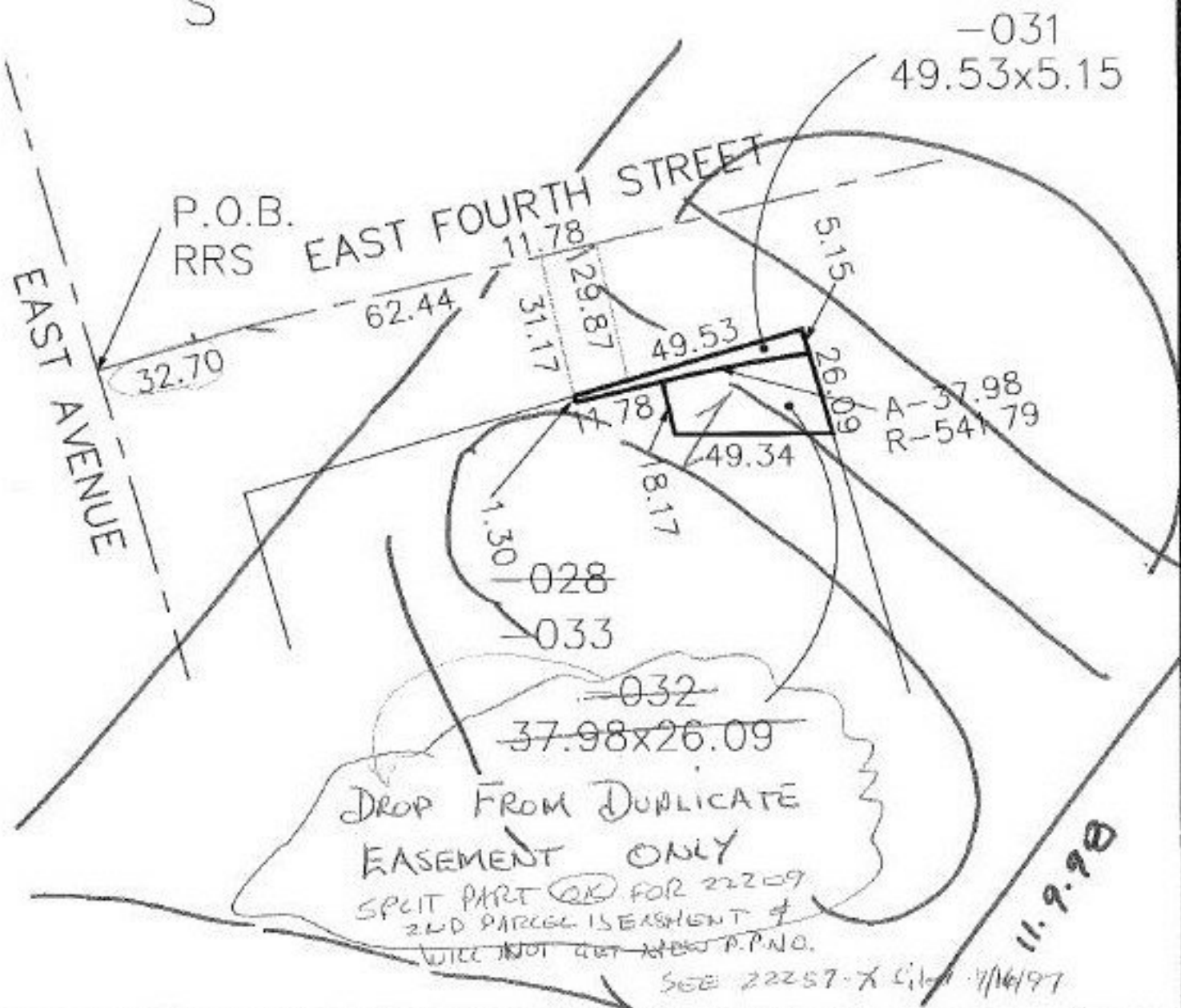
STARTING POINT: INT CL EAST AVENUE & EAST FOURTH STREET

NO. ~~22209~~

22258X



FILED
SEE 22257-X
FOR DROP FROM DUP.
THAT ELIMINATED -032
AS A NEW SPLIT PARCEL



SPLITS/DEEDS PROCESSED

LORAIN COUNTY TAX MAP DEPARTMENT
226 MIDDLE AVE. ELYRIA, OHIO

SURVEYED BY: JAMES E. KARING

CLOSURE: 1.07: 10.000

MAP PAGE(S): 6-120

APPROVED BY: REB DATE: 06/19/97

SCALE: 1" = 50'