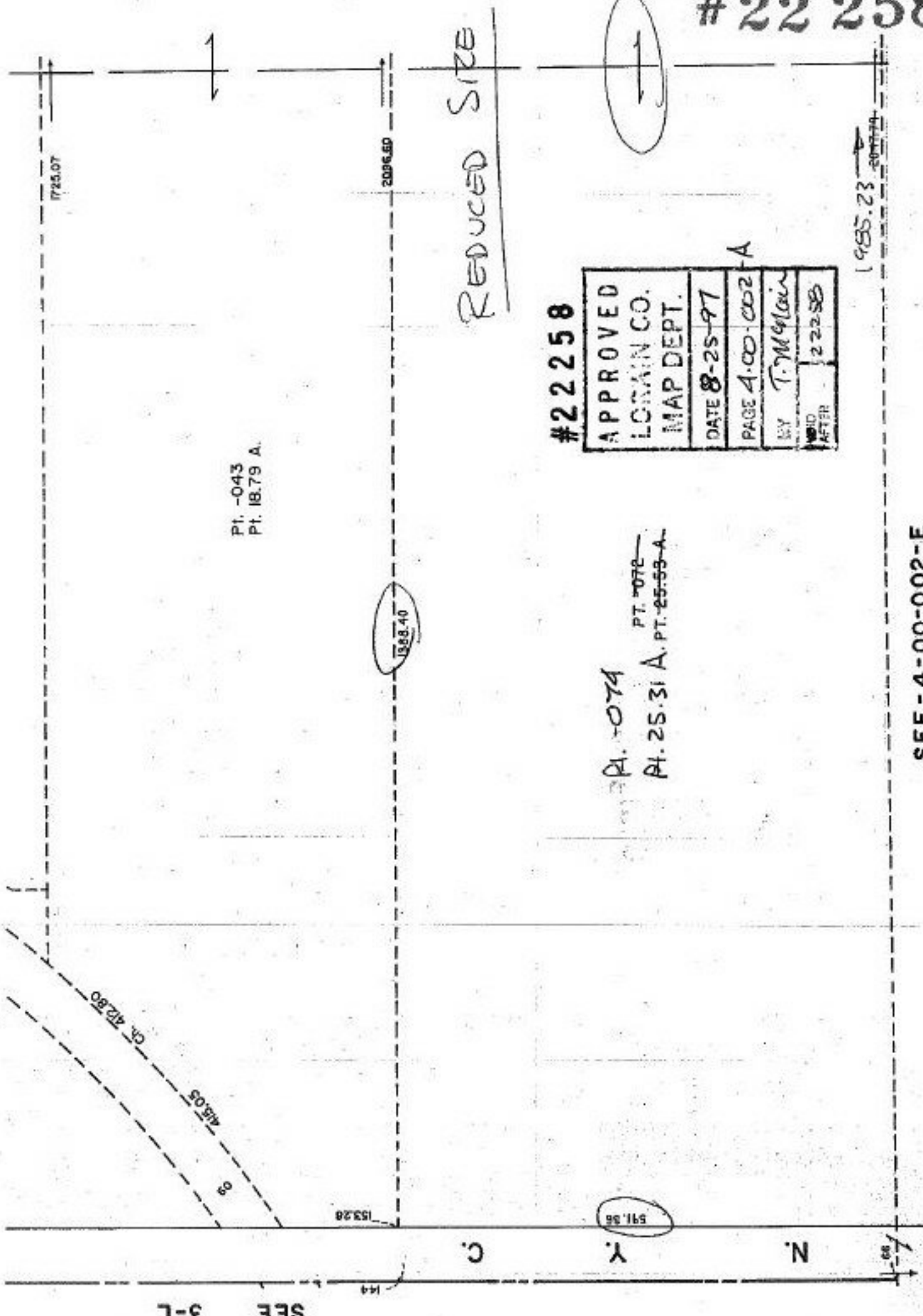


#22 258



Pt. -043  
Pt. 18.79 A.

A. -074  
Pt. 078  
Pt. 25.31 A. Pt. 25-59-A.

#22258

APPROVED
LOWMAN CO.
MAP DEPT.
DATE 8-25-97
PAGE 4-00-002-A
BY T. McLean
VOID AFTER 2-22-98

1985.23

SEE - 4-00-002-E