

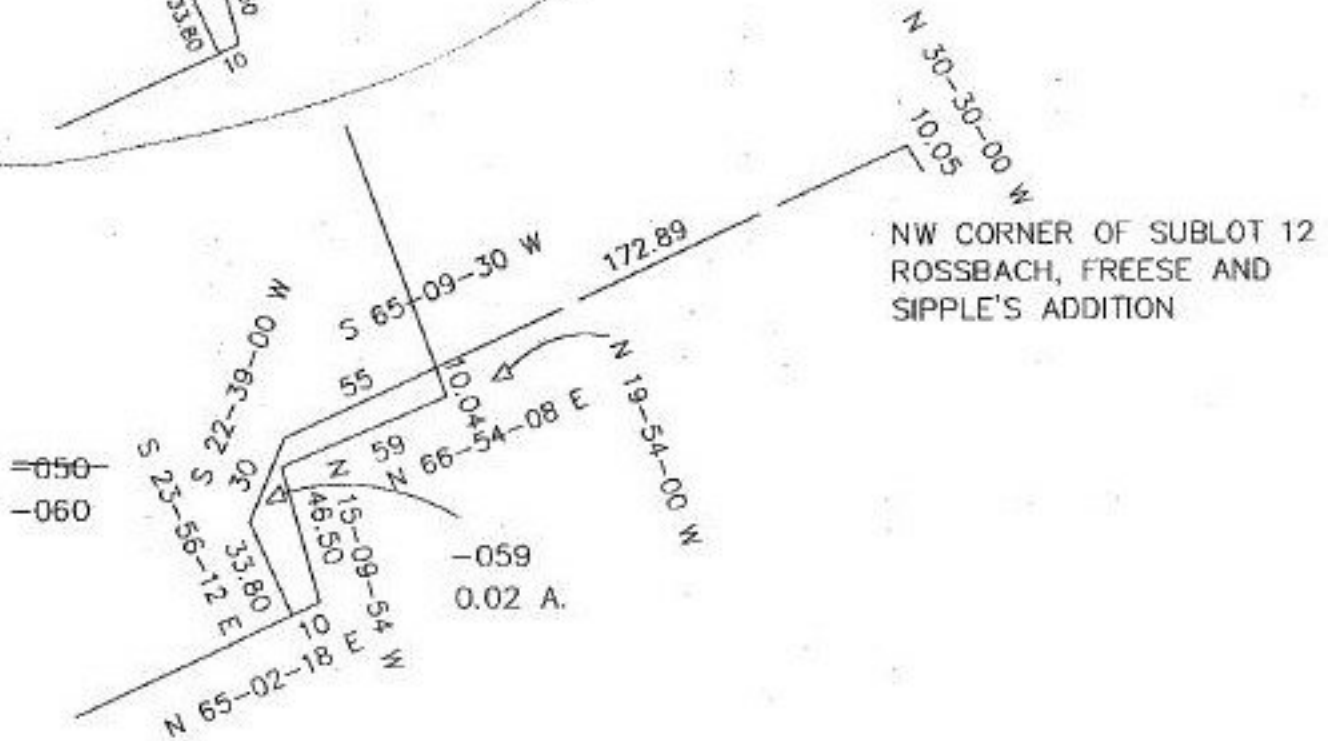
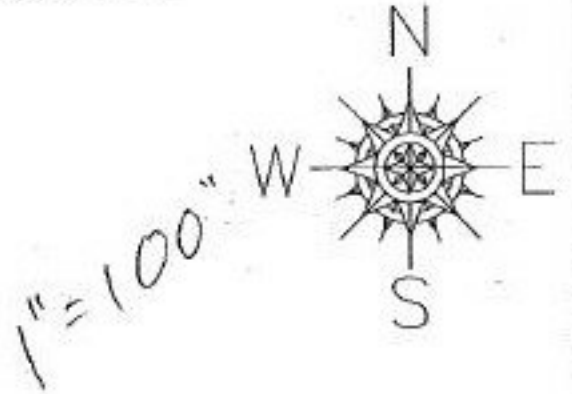
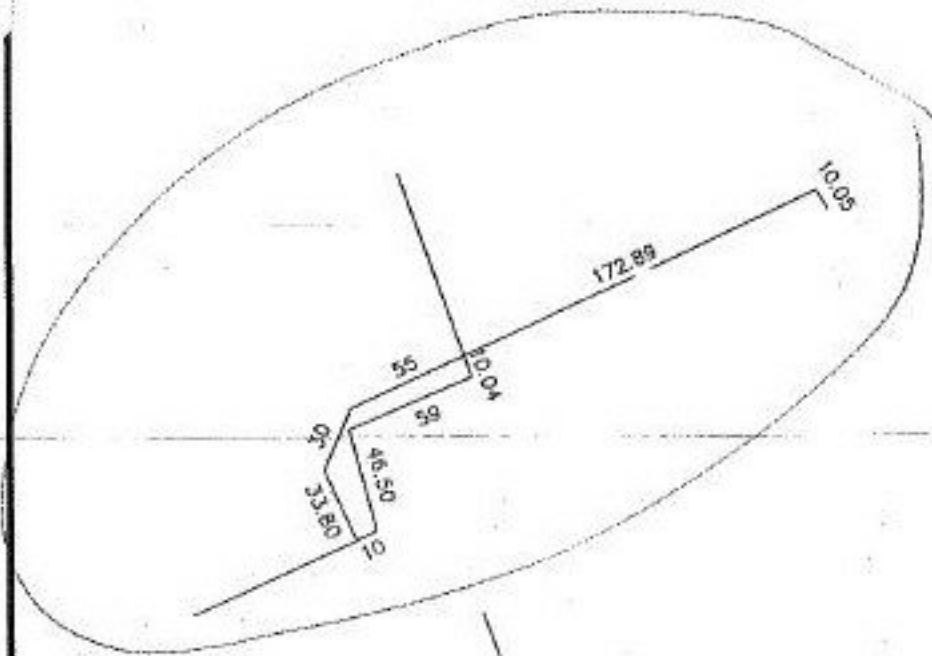
# #22256

PARENT PARCEL: 05-00-023-110-050

CHILD PARCEL: 05-00-023-110-059, 060

STARTING POINT: NW CORNER OF SUBLT 12, ROSSBACH, FREESE, & SIPPLE'S ADDITION

## NO. 22256



**SPLITS/DEEDS PROCESSED**  
LORAIN COUNTY TAX MAP DEPARTMENT  
226 MIDDLE AVE. ELYRIA, OHIO

SURVEYED BY: PATRICK A. MCGANNON  
CLOSURE: 0.18:10.000  
MAP PAGE(S): **05-00-023-A**  
APPROVED BY: KAC DATE: 8/13/97  
SCALE: 1" = 50' PRIOR INSTRUMENT: