

-063  
1.72 A.  
SMITH - PAPER  
PART MARCH 12  
3/25/94  
DR. BOB / 421

NEEDS TO BE SURVEYED  
TO CHECK ACREAGE &  
PUT DIMENSIONS ON  
EAST & WEST LINES

-022  
7.18 A.

LYNCH CHARLES & SHARON  
8/15/97  
970481140

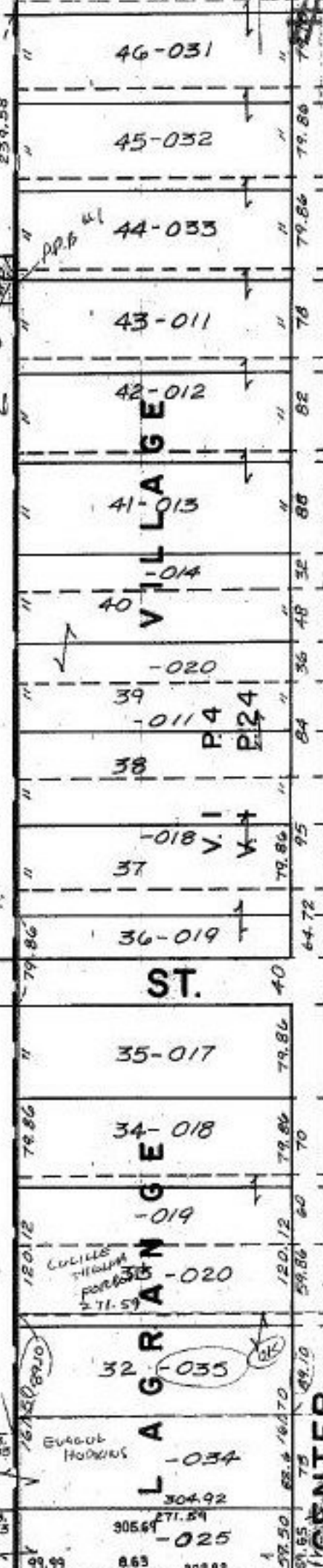
PROSPECT ST. NEEDS  
TO APPEAR AS AN  
EXCEPTION.

#22256-D

APPROVED  
LORAIN CO.  
MAP DEPT.  
DATE 10-9-97  
P. 15-00-045-B  
BY T. McMan  
VINO  
NTR 22256-D

313.5

-014  
8.1 A.



46-031

45-032

44-033

43-011

42-012

41-013

40-014

-020

39

-011 4

38

-018

37

36-019

35-017

34-018

-019

-020

32-035

-034

304.92

305.64

-025

10

10

301

103

105

CENTER

-009  
7.70 A.

-043  
3.54 A.

29.40

937.81

148.50

82.50

97.94

115.87

15.87

15.87

15.87

164.82

164.82

164.82

164.82

164.82

164.82

164.82

164.82

164.82

164.82

164.82

164.82

164.82

164.82

164.82

164.82

164.82

164.82

164.82

164.82

164.82

164.82

164.82

164.82

164.82

164.82

164.82

164.82

164.82

164.82

164.82

164.82

164.82

164.82

164.82

164.82

164.82

164.82

164.82

164.82

164.82

164.82

164.82

164.82

164.82

164.82

164.82

164.82

164.82

164.82

164.82

164.82

164.82

164.82

164.82

164.82

164.82

164.82

164.82

164.82

164.82

164.82

164.82

164.82

164.82

164.82

164.82

164.82

164.82

164.82

164.82

164.82

164.82

164.82

164.82

164.82