

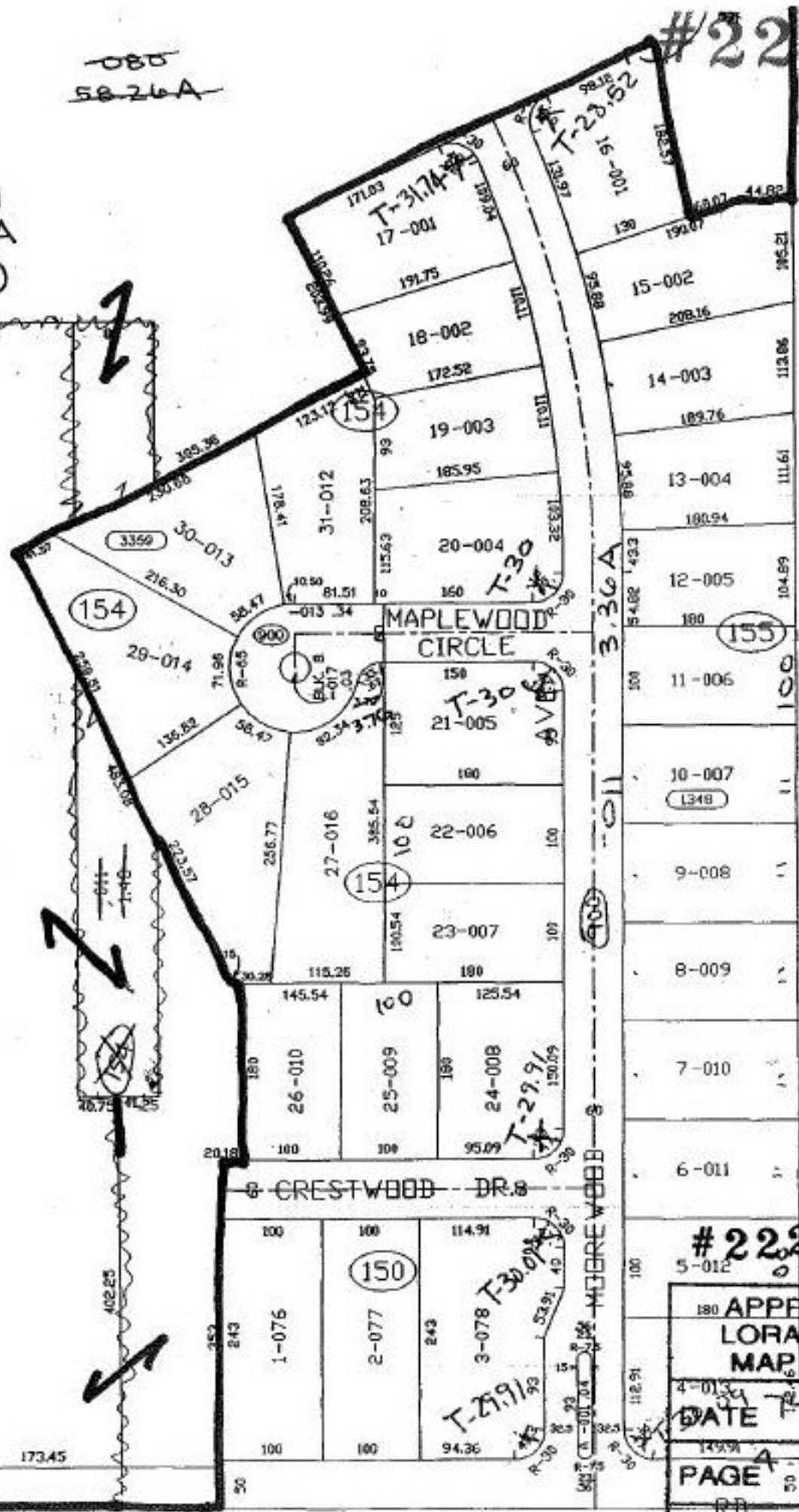
-080
58-26A

#22256-D

-081
81.71A
(Combo)

-018
21.97A

(50)



#22256-D

180	APPROVED
	LORAIN CO.
	MAP DEPT
4-013	DATE 7-10-97
149.91	PAGE 4-00-007H
RD.	BY R. BELL
	#22256-D

Sht. 2 of A

SEE 4-00-008-D