

E r i o

No DISTANCES ON DEED,  
DEED NEEDS TO BE UPDATED,  
SHOULD NOT TRANSFER.

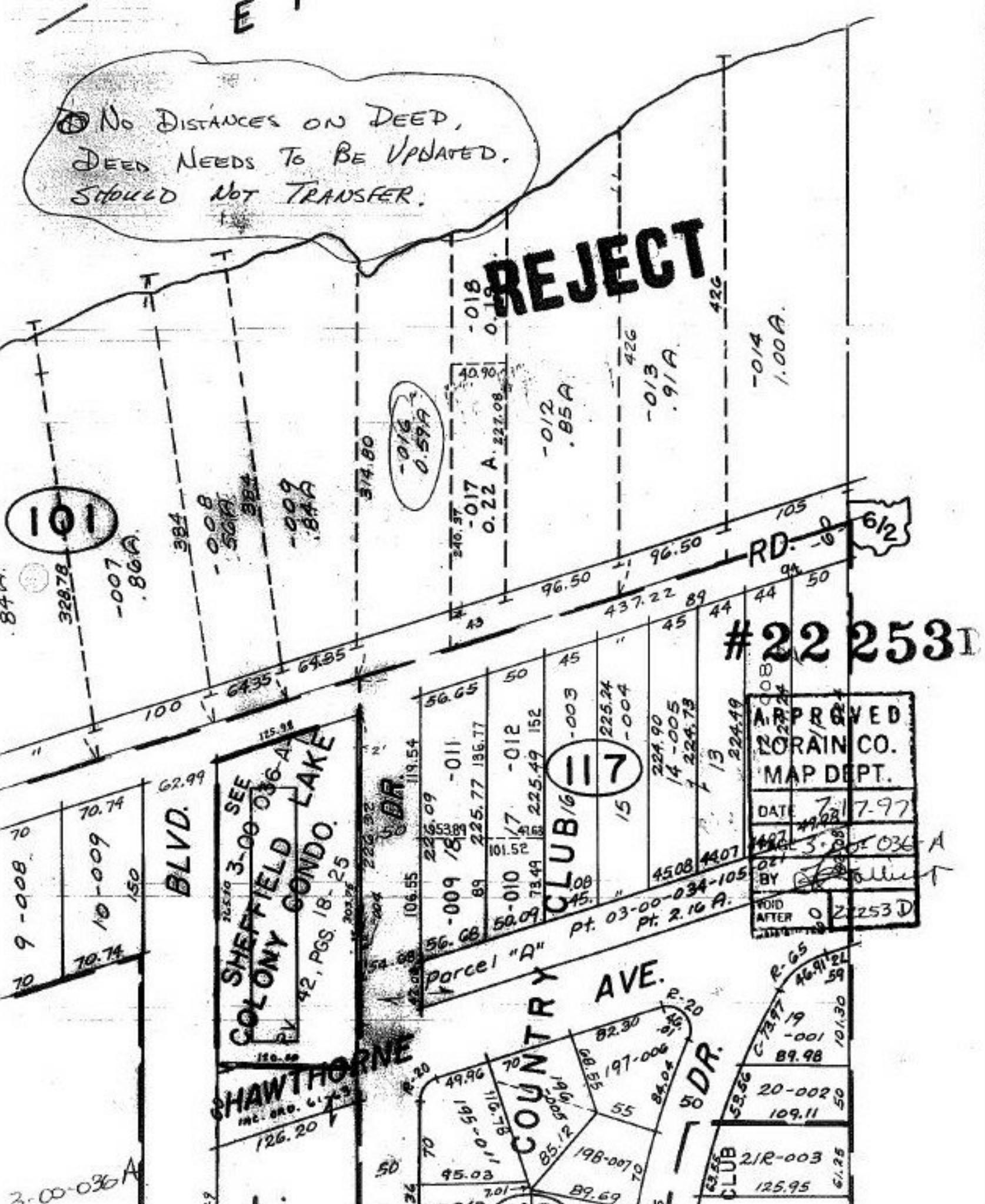
**REJECT**

101

-016  
0.59A

#22 253 D

APPROVED	
MORAIN CO. MAP DEPT.	
DATE	7-7-97
BY	[Signature]
VOID AFTER	02/25/98



9-008  
10-009  
150  
70.74  
70.74  
62.99

BLVD.

SEE 3-00-036-A  
SHEPHERD COLONY CONDO. LAKE  
42 PGS 18-25  
DR.

DR.

56.65  
50  
56.68  
89  
50.09  
101.52  
17  
152  
-011  
-012  
-003  
15  
13  
224.90  
14-005  
224.73  
224.49  
4508  
4407  
Pt. 03-00-034-105  
Pt. 2.16 A.

117

parcel "A"

COUNTRY AVE.  
R-20  
82.30  
197-006  
84.04  
55  
198-007  
89.69

DR.

R-65  
19  
89.98  
20-002  
109.11  
50  
21R-003  
125.95  
61.25

3-00-036 A