

PARENT PARCEL: 07-00-004-108-006

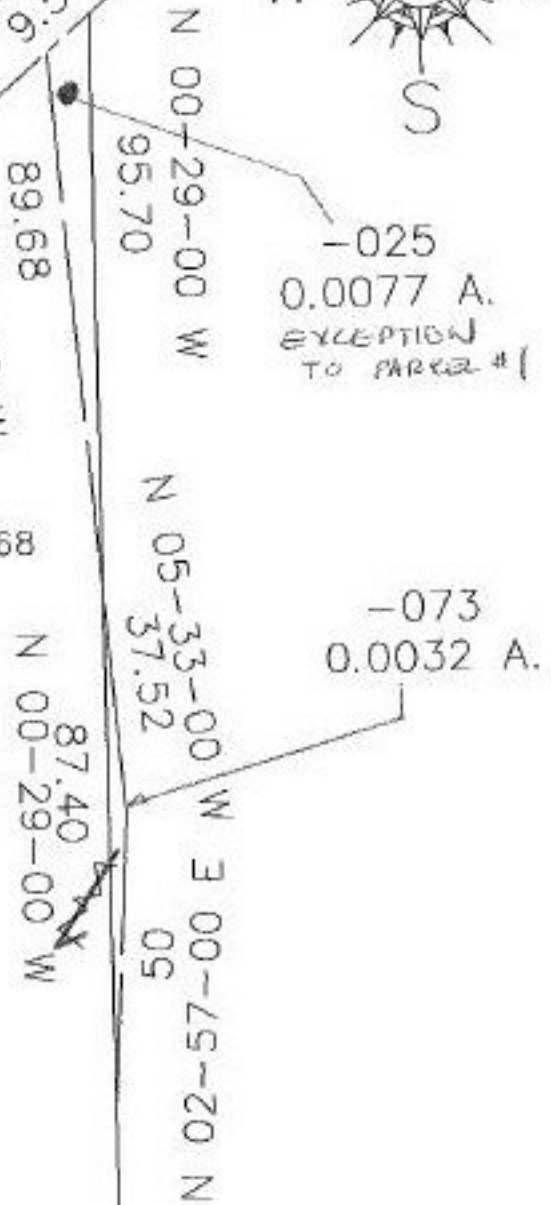
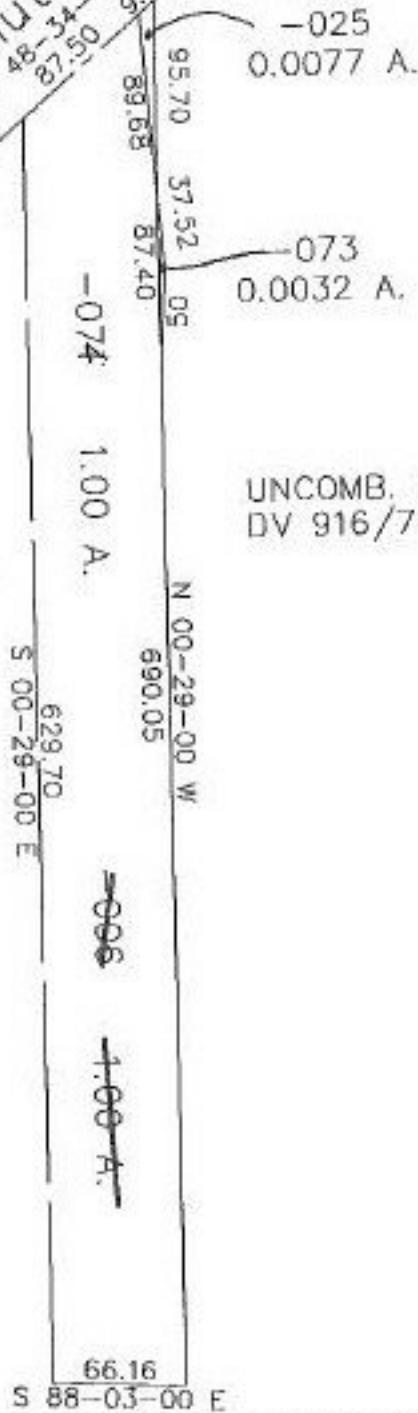
CHILD PARCEL: 07-00-004-108-073,074

STARTING POINT: CL OF CHESTNUT RIDGE (NE CORNER OF -025)

NO. 22251-U

Chestnut Ridge

Chestnut Ridge



UNCOMB. PER DEEDS:
DV 916/77 & OR 950/668

~~086~~
~~1.00 A.~~

~~074~~
~~1.00 A.~~



SPLITS/DEEDS PROCESSED

LORAIN COUNTY TAX MAP DEPARTMENT
226 MIDDLE AVE. ELYRIA, OHIO

SURVEYED BY: C.T. Biggs
 CLOSURE: ALL'S PARCELS LTHRU 1/10/20
 MAP PAGE(S): 07-00-004-8
 APPROVED BY: KAC DATE: 8/11/97
 SCALE: 1" = 100' PRIOR INSTRUMENT: OR 950/668